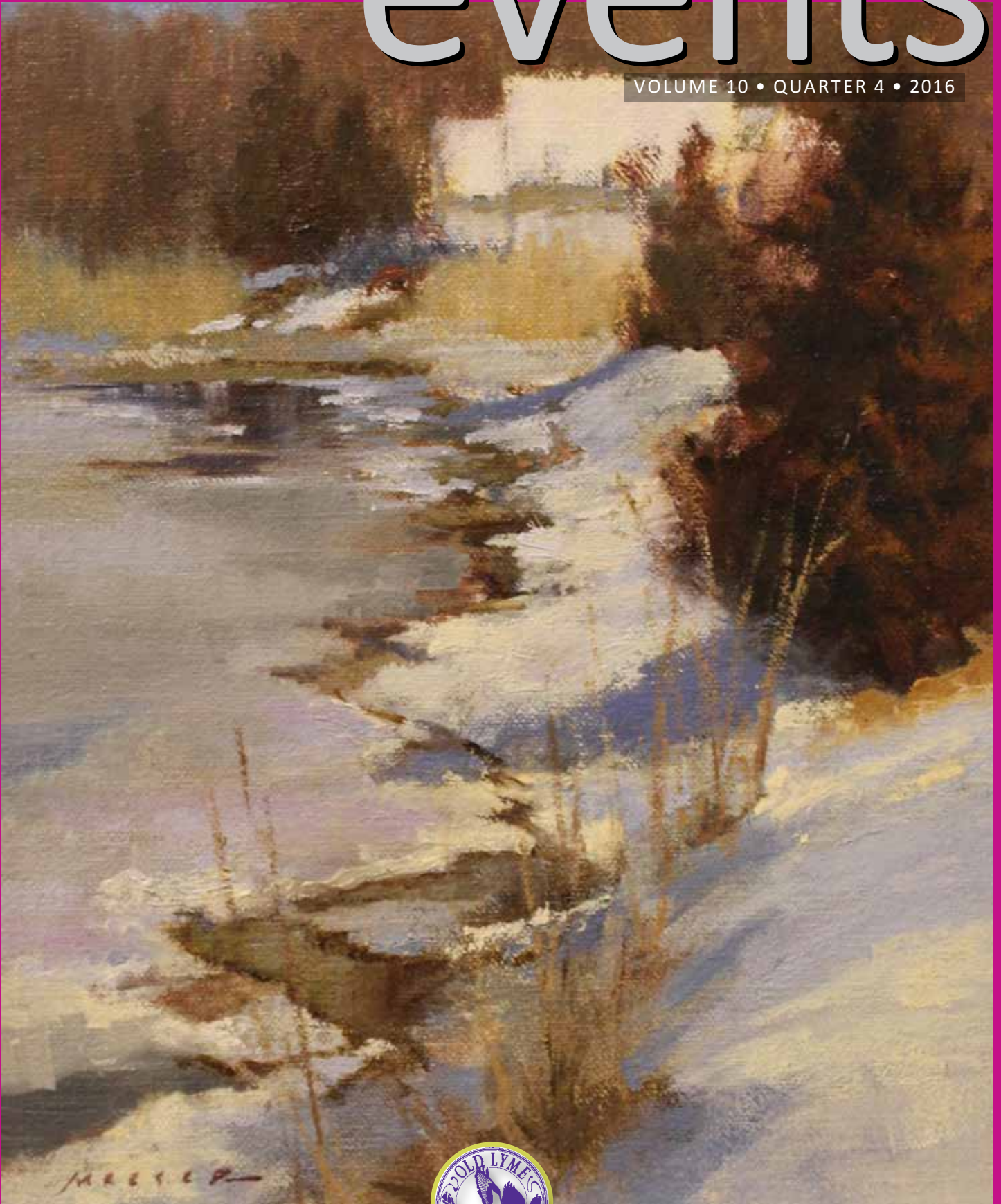


Old Lyme events

VOLUME 10 • QUARTER 4 • 2016



DELIVERING TOWN NEWS

TO EVERYONE IN TOWN



OUR SLEEP SPECIALISTS WON'T REST UNTIL YOU DO

We're Offering the Most Innovative Sleep Apnea Treatments in the State

No two people sleep alike. And no two sleep apnea sufferers suffer alike. That's why, at our state-of-the-art Sleep Disorder Center, we've put together a team of sleep specialists who are experts at using the most innovative treatments available to design a personalized approach for every patient. In fact, we're the first hospital in Connecticut to offer minimally invasive robot-assisted sleep apnea surgery and Inspire[®] therapy, the newest groundbreaking sleep apnea treatment. Using smarter technology to bring dreams to life—that's *The Smarter Choice for Care*.

To learn more, visit middlesexhospital.org/sleep



First Selectwoman's Corner

As we prepare for the winter of 2017, I think we are all happy to have Election 2016 behind us! As elections go, some see the results as a prayer answered, while others see them as hopes dashed. Such is the diversity in any community, and we must go on with respect for one another, doing our part in bringing people together for the greater good. The Board of Selectmen, along with all of our Boards and Commissions will continue to set an example for our State and National level on cooperation, collaboration and cohesiveness. Change is often challenging, but this community is up to the challenge!

Speaking of CHANGE – at a Town Meeting held on Sept. 27, residents voted 82-79 in favor of joining Ledge Light Health District, which became effective as of November 1, 2016. As First Selectwoman, I accepted the appointment to their Board of Directors until June 30, 2017. The Board of Selectmen is hopeful that someone with an interest in Health issues will step up to serve as representative for Old Lyme after that date. Anyone interested should fill out a Request for Appointment form, which is available on the town website (www.oldlyme-ct.gov). Stephen Mansfield, the Director of Health, has spent quite some time in Old Lyme helping with the transition, and Patti Myers, former employee of Old Lyme, spends most of her hours at the same desk on the second floor of Town Hall. She will be instrumental in making this a smooth transition to Ledge Light Health District. Please visit the website for Ledge Light Health District at www.ledgelighthd.org, and see how many services are available, including forms, educational information on Healthy Communities, Healthy Homes

and Emergency Preparedness. While there may be some initial bumps in the road, we are working closely together to address concerns swiftly and efficiently, so please don't hesitate to communicate with us – on your great experiences as well as your concerns. A heartfelt thank you to the entire staff on the second floor for their efforts in making this a smooth transition. And special thanks to you, our residents, for your patience during the initial adjustment.



Bonnie A. Reemsnyder
First Selectwoman

One of the biggest concerns in this community is the NEC Future Alternative I plan for a bypass from Old Saybrook, CT to Kenyon, RI, which would slice through the heart of our community. On August 29, a roundtable discussion was held at the Lyme Old Lyme High School with representatives from the FRA and First Selectmen and Mayors from every town on the shoreline from Old Saybrook to Stonington. In addition, Senator Blumenthal, Congressman Courtney, CT DOT Commissioner Redecker, and our state representatives joined us for a discussion on the concerns expressed by so many in Old Lyme, as well as other shoreline towns. Most impressive was the attendance – over 500 people attended to hear what the FRA had to say about this plan and answer questions submitted by many individuals and organizations in the area.

continued on page 3

A photograph of a well-decorated living room. In the center is a light-colored sofa with a yellow pillow and floral patterned cushions. A white coffee table is in front of it. To the left is a side table with a lamp and decorative items. To the right is another side table with a lamp and a vase of flowers. The room has large windows with patterned curtains. A dark oval logo with white text is overlaid on the coffee table.

**Saybrook
Country Barn**
2 Main Street - Old Saybrook CT

STYLE YOU DESIRE, QUALITY YOU DESERVE

DESIGNER FURNITURE | HOME DECOR | APPAREL BOUTIQUE

860-388-0891 saybrookcountrybarn.com

events

TM Ventures, LLC
dba Essex Printing & Events Magazines

18 Industrial Park Road, P.O.Box 205
 Centerbrook, CT 06409

860-767-9087 Fax 860-767-0259
 email: print@essexprinting.com
 www.essexprinting.com

PUBLISHER
 William E. McMin

ART DIRECTOR
 Kathy Alsop 860-391-4372
 kathy@eventsmagazines.com

COVER EDITOR
 AC Proctor 860-767-9087

LAYOUT & AD DESIGN
 Lynne Hardt

SALES REPRESENTATIVES

VERNON • TOLLAND
ELLINGTON • WILLINGTON
 Tom Fortin 860-299-4568
 tom@eventsmagazines.com

ESSEX • WESTBROOK
CLINTON • MADISON
 Ward Feirer 914-806-5500
 wfeirer@gmail.com

OLD SAYBROOK • OLD LYME • EAST LYME
 Betty Martelle 860-333-7117
 betty@eventsmagazines.com

CHESTER • EAST HADDAM
EAST HAMPTON • HADDAM
 Sue Smith 860-885-9670
 sue@eventsmagazines.com

GUILFORD • STONINGTON
 Essex Printing 860-767-9087
 print@essexprinting.com

COVER: Barbara Maiser, Edge of the
 River, Winter, oil. On view at The Lyme Art
 Association, 90 Lyme Street.

www.eventsmagazines.com

OVER 1,000,000 READERS
17 TOWNS EVERY QUARTER

Copyright© 2016 Events Magazines. All rights reserved. No part of this publication may be reproduced or transmitted in any form or by any means, electronic or mechanical, including photocopy, recording, or any information storage and retrieval system without written permission. Not responsible for omissions or typographical errors. All advertising material created by Essex Printing and Events Magazines is to be considered proprietary. Essex Printing and Events Magazines reserves the rights and license to all ad designs and photographic images produced by Essex Printing and Events Magazines. Reproduction rights for individual use in other publications is offered and available by purchase directly through Essex Printing and Events Magazines. Editorial appearing in this magazine is submitted by municipal agencies and other approved sources.

CONTENTS

First Selectwoman's Corner.....	1
Assessor's Office.....	6
Tax Collector's Notice.....	6
A Very Merry Holiday Pops.....	7
Town Clerk's Office.....	8
Conservation Commission.....	9
High Hopes.....	9
Do You Have an AED in Your Building?.....	10
Town of Old Lyme Social Services.....	10
Lyme Academy College of Fine Arts.....	12
Lyme Art Association.....	14
Lymes' Youth Service Bureau.....	14
Holiday Wine Gifts.....	16
Florence Griswold Museum.....	17
Streetlights.....	19
Town Directory.....	19
Studio 80 + Sculpture Grounds.....	20
Old Lyme Phoebe Griffin Noyes Library.....	20
The Lyme-Old Lyme Chamber of Commerce.....	21
The Lyme-Old Lyme Volunteer Connection.....	22
Holiday Planning.....	24
Spend Some Time Thinking About the Future.....	24
Distribution of YPSM Greater New Haven YP Directory.....	25
Musical Masterworks.....	26
Rogers Lake Authority News.....	26
Trash & Recycling.....	27
Transfer Station Information.....	27
Lymes' Senior Center.....	28
Lions Club Super Bowl Sunday Pancake Breakfast.....	30
Estuary Council Regional Senior Center.....	32
Duck River Garden Club.....	34
Pay Your Taxes Online.....	35
Lyme-Old Lyme High School Honors Veterans.....	36

Town Hours & Holiday Schedule

**TOWN HALL WILL BE CLOSED
 ON THE FOLLOWING HOLIDAYS:**

- Monday, December 26, 2016 – Christmas Day**
- Monday, January 02, 2017 – New Year's Day**
- Monday, January 16, 2017 – Martin Luther King, Jr. Day**
- Monday, February 20, 2017 – President's Day**
- Friday, April 14, 2017 – Good Friday**

**Town Hall Hours for most departments is
 Monday through Friday, 9am – 4pm.**

First Selectwoman's Corner ... continued from page 1

Unfortunately, while it gave us the opportunity to hear answers first hand, it brought us no closer to the decision of the FRA. On November 2, I sent a letter to FRA Administrator Sarah Feinberg, urging her to move forward with a decision, and requesting that the bypass be removed from the plan. We continue to follow the progress (or lack of) in the hopes that our community can get back to focusing on the things most important to us - the environment, economic health, and the education of our children.

The construction of the Boathouse at Hains Park is well underway, but has not been without its challenges. Many of you may be aware of change orders that have caused some consternation, the biggest one being the removal and replacement of the original slab. This change order put a strain on the anticipated cost for the boathouse itself, and puts in question the adequacy of the funds to renovate the bathrooms. The Boathouse Hains Park Improvements Committee was trying to be collaborative and responsive to concerns when they planned to reuse the slab from the old boathouse, but once construction began, it became clear that the slab would not be adequate. While this was a setback, the Selectmen acknowledged that the foundation is a critical component to any building, so we had to move forward. Other change orders were more reasonable and within standard percentages anticipated in most projects. Once past those issues, the boathouse construction has progressed. By the time this is in print, we anticipate completion of the basketball court, and enclosure of the building, allowing the interior to be used to store boats! If you are interested in supporting additional enhancements to the project, or the park in general, there is a Fundraising Committee focusing on supporting

ideas such as a Pavilion for the Park. Information on donations can be found on the Town website. Thank you to the many individuals and businesses that have already donated to the effort.

As if we don't have enough going on, the Rte. 156 Bikeway/Sound View Improvements project has commenced. While it may not look like a lot is going on, we have had deliveries of materials, and preparation of the asphalt for installation of new drainage. Some of the work will be done before winter, but the most visible work will likely take place in the Spring. So far, things are progressing on this project with no surprises. Hartford Ave. residents will be notified in advance of any work limiting their access to their own property.

Attorney Jack Collins of Old Lyme has been appointed as the new Town Attorney by the Board of Selectmen, due to the resignation of Attorney Marilyn Clarke who has been a regular here in Town Hall, both as our Town Attorney and when she is researching documents in the Town Clerk's office. While we will miss her, we are delighted to know that she was just elected as the Democratic Registrar of Voters, along with Catherine Carter, who was elected as the Republican Registrar of Voters. Congratulations to both, and special thanks to Attorney Clarke for her 30 years of service to the Town! We welcome Jack Collins, and the firm of Suisman Shapiro, to the role of Town Attorney and look forward to a healthy relationship!

Tim Griswold, Chris Kerr and I have been exploring the costs and benefits of changing all of our street lights to LED lights, which offer tremendous savings in electricity and maintenance costs.

continued on page 4



It's time to connect you with the best talent in the CT area.

Whether you're recruiting for direct hire, looking to fill contract staffing positions, or need resume screening help, A.R. Mazzotta is here to deliver the results. Here is how we have become the most trusted and successful employment agency in CT.

- We get to know you. We take the time to personally understand your business.
- We get to know our talent. We interview candidates using behavioral-based methods, evaluate skills and perform reference checks.

Over 5 decades of excellent service proves how much we care.
Contact us today www.armazzotta.com



Recruiting | Staffing | Payrolling

www.armazzotta.com

First Selectwoman's Corner ... continued from page 1

Tanko Lighting has been chosen to install lights on Halls Road, our commercial center, and the corner of Lyme St. and McCurdy Rd. They will use two different manufacturers, and we will solicit feedback from residents on their preferences. The Halls Road lights will be appropriately brighter, and the lights on Church Corner will be in keeping with residential lighting. Keep your eyes to the sky on these streets in the near future so you can see the difference. We are interested in your feedback!

While we are only 5 months into this fiscal year, the Boards of Selectmen and Finance are already making preparations for working out the Fiscal Year 2018 budget. Letters have gone out to all of our Departments, as well as Boards and Commissions for their budget requests. The Board of Selectmen will review budget numbers in January and are expected to submit a draft budget to the Board of Finance by February 2017.

After over 50 years of service to the Town of Old Lyme – yes, that is not a misprint – 50 YEARS, Bob Swaney has retired from Public Works! Bob has been a valued member of the crew, and his knowledge of the infrastructure has always come in handy. After so many years, the Board of Selectmen found it fitting to name October 28, 2016 as Bob Swaney Day in Old Lyme. We wish him and his wife, Terry, many joyful years of retirement – THANK YOU Bob, for your years of good service. With Bob's retirement and the resignation of another crew member, the Public Works Department welcomes two new employees, both town residents – Ben Carroll and Paul Fiore. Both have been working for some time now, and are doing a wonderful job. Welcome to you both!

Also leaving to a new job is Valerie Goncalves, who served as Social Services Coordinator. Best wishes to Valerie, and a warm welcome to Jennifer Datum, who was hired as the new Social Services Coordinator. Jennifer is a resident of Old Lyme, and comes with a research background as a Librarian. Jennifer is a compassionate person, with great research and people skills that will serve us well in this position.

Did you know that the Land Use Departments closed early one day for staff meetings?

Did you know that Potapaug Audubon sponsored a Fall Foliage River Quest tour?

Did you know that the Old Lyme Police Department holds an annual food drive?

If you are subscribed to the Town website, you would know all of these things! An email would automatically be sent to you, so go now to the website, www.oldlyme-ct.gov, click on the button Subscribe to News, and fill in the form. It's quick and easy, and you'll get all the information you need – automatically!

Have a safe and warm winter of 2017. On behalf of the entire Board of Selectmen, I wish you a very Happy Holiday Season and Prosperous New Year.

Bonnie A. Reemsnyder, First Selectwoman

Earth Care

of Old Lyme

"where vision becomes reality"

Property Maintenance Management and Care Taking Services

MAINTENANCE SERVICES

- Year Round Landscape & Lawn Care
- Dethatching, Core Aeration, & Seeding
- Stone Driveways, Edging, & Aprons
- Cobblestone, Bluestone, Paver Projects
- Drainage Problems Addressed
- Stone Wall Restoration & Construction
- Retaining Walls & Seawalls
- Small Paving Repairs

MANAGEMENT SERVICES

- Complete 24/7 Property Monitoring & Inspection
- Coordinating Deliveries & Postal Needs
- Scheduling & Monitoring Tradesmen
- Storm Preparation & Clean Up
- Evaluating & Scheduling Emergency Repairs
- Complete Snow Removal Service
- References & Bonding Available

Tired of Unreliable People? Call

David K. Flagge
Shore Road, Old Lyme, CT
Fully Insured - Lic. #578608
Phone & Fax: 860-434-0558

THE CHEESE SHOP of Centerbrook

Come in &
sample our
cheese before
you buy!



Gift Baskets
Gift Boxes
Party Trays

**Come See Us for
Your Holiday List!**

**Largest Selection of Imported & Domestic Cheese
Imported & Domestic Pastas
Specialty Meats**

Special Holiday Hours: December 11 & 18, 10-2
Open Monday-Friday 10-6, Saturday 9:30-5:30, Closed Sunday

860-767-8500

www.cheeseshopcenterbrook.com

33 Main Street, Centerbrook, CT 06409



William Pitt

Sotheby's
INTERNATIONAL REALTY

The Essence of Our Brand Portrayed in a Word



Impressive

42 Attawan Road, East Lyme | \$1,100,000



Refined

303 Joshuatown Road, Lyme | \$489,000



Elegant

14 Lincoln Street, Niantic | \$850,000



Sophisticated

4 Johnny Cake Hill, Old Lyme | \$850,000



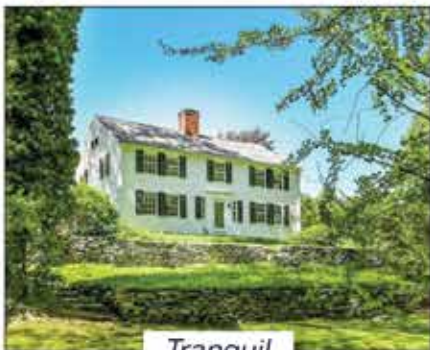
Inviting

14 Riverbend Road, Old Lyme | \$748,800



Serene

7 Old Bridge Road, Old Lyme | \$720,000



Tranquil

348 Beaver Brook Road, Lyme | \$1,600,000



Expansive

138 Brush Hill Road, Lyme | \$595,000



Timeless

3 Bill Hill Road, Old Lyme | \$1,195,000

williampitt.com

OLD LYME BROKERAGE | 103 HALLS ROAD | 860.434.2400

ESSEX BROKERAGE | 13 MAIN STREET | 860.767.7488

65 COUNTRIES | 20,000 SALES ASSOCIATES | 850+ OFFICES

Each Office is Independently Owned and Operated.

Assessor's Office

ASSESSMENT APPEALS

Applications for the Board of Assessment Appeals process will be available in this office the end of January 2017.

Applications must be filled out and returned to the Assessors office in its entirety on or before February 20. The Board of Assessment Appeals meeting dates are not yet available.

The Assessors Office reminds residents of Elderly & Totally Disabled and Additional Veterans tax relief availability. Elderly & Totally Disabled Tax Relief for Homeowners is available from February 15 through May 15. An additional Veterans Exemption is also available for those who qualify for the above. To qualify, recipients must have reached the age of 65 or older by the end of the

previous year or be totally disabled. Eligibility is also based on combined/single income limitations & length of home ownership. Applicants may not be receiving federal, state, county or municipal financial subsidy or aid.

For more information please call Mickie Fraser, Administrative Assessment Technician @ 434-1605 Ext. 219.

Tax Collector's Notice

Notice is hereby given to the Taxpayers of the Town of Old Lyme that the second installment of a tax of 21.2 mills on the dollar laid on the Grand List of October 1, 2015 is due January 1, 2017. Also due on that date are the supplemental Motor Vehicle tax bills.

Payments must be made on or before February 1, 2016 to avoid penalty. Any payment made after that date

will be charged interest at the rate of 1 ½% per month going back to the due date. (February interest is 3%).

Payments may be made at the Old Lyme Town Hall, 52 Lyme Street, or mailed to the Old Lyme Tax Office, PO Box 482, Old Lyme, CT 06371.

Thinking about selling your home in 2017?
Contact us now to set up a staging appointment.
We can help you achieve your goals.



William
Pitt

Sotheby's
INTERNATIONAL REALTY

On Course for 2017!

JENNIFER & JANE ASSOCIATES

*Essex Brokerage
2015 Sales of \$45,996,500
#1 Team Companywide 2013, 2014, 2015
#1 Dollar Volume Closed 2015 in all of Middlesex
and New London Counties
Licensed in Connecticut and Rhode Island*

ESSEX BROKERAGE

13 Main Street
860.767.7488

Each Office is Independently Owned and Operated.



Jennifer Caulfield

860.388.7710

Jane Pfeffer

860.227.6634

jenniferandjane@wpsir.com

OLD LYME BROKERAGE

103 Halls Road
860.434.2400

Equal Housing Opportunity.

A Very Merry Holiday Pops

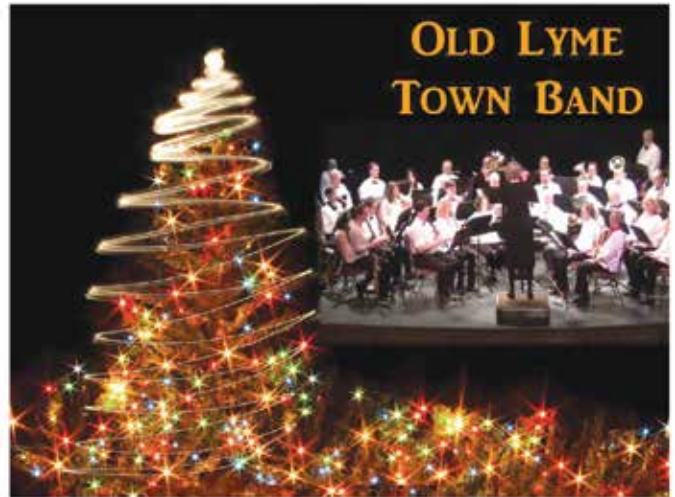
**Old Lyme Town Band / December 15th at 7pm
The Katharine Hepburn Cultural Arts Center**

Bring the whole family to experience the holiday magic as Old Lyme Town Band returns to the Kate in Old Saybrook to perform its annual Holiday Pops Concert. This all new production will include holiday classics, sing-along, and Clement Clarke Moore's classic, 'Twas the Night Before Christmas narrated by composer and musician, Donald Shirer.

Keep your Holiday Pops Concert tradition going or start a new tradition of holiday music with family and friends.

Website: <http://oldlymetownband.blogspot.com/>

Facebook: <http://goo.gl/Gk4UmJ>



**Want to Reach Every Home & Business in Town?
Call Betty Martelle at 860.333.7117**

Come stay with us this winter!

Cozy up to a seasonal stay at our gracious retirement living community

From the comfort of your own apartment, you'll experience carefree living all winter long. As the snow flies, you'll enjoy the same benefits as our long-term residents do such as:

- Maintenance-free living
- Three delicious meals served restaurant-style daily
- Educational and social activities in a welcoming community
- Exercise and wellness programs
- Health care assistance available if needed
- Emergency call system with a 24-hour-a-day response

At The Saybrook at Haddam, there's no "buy-in" required; this is a monthly rental community.



~Retirement and Assisted Living~Memory Care~

1556 Saybrook Road, Haddam, CT 06438

www.TheSaybrookAtHaddam.com

Call for details about our seasonal or long-term options. 860-345-3779

COLDWELL BANKER

RESIDENTIAL BROKERAGE

PROVEN results in
EVERY market!



Nancy Mesham
(860) 227-9071



41 Neck Road, Old Lyme - The View. \$1,599,000



83 Norwich Salem Road, Old Lyme - One floor living. \$399,000



1 Day Hill Road, Old Lyme - Mini-compound. \$599,000



9 Whippetree Lane, Old Lyme - Exquisite. \$525,000



2 Littlefield Lane, Old Lyme - Artists retreat. \$369,000



6 Duchess Drive, Old Lyme
\$425,000



57 Coult Lane, Old Lyme
\$567,500

Old Lyme Office | PO Box 509/86 Halls Road | Old Lyme, CT 06371
860.227.9071 | nancymesham.com



Town Clerk's Office

Eileen K. Coffee, Town Clerk

Vicki Urbowicz, Assistant Town Clerk

Congratulations!

We congratulate the following on their recent marriages:

July

Brian David Temte & Dahliani Reynolds
Jason Michael Biondo & Chelsea Margaret Mangs
Gregory James Giustino & Lauren Alexandra Hart
John Wesley Harvey & Jennifer Mary Moore
Emerson Hutcheson Fitch & Emily Anne Janacek
Richard Scott Dubay & Michele Lynn Radin
Jason Saroyan Ignatius & Allison Claire Bullard
Dorothy Karen Hart Ashe & Nancy Sue Cartwright
Michael Paul Sherman & Julia De Martini Day
Sean Michael Keating & Jessica Marie Fagan

August

Christopher Gene Ennis & Chelsea Lynn Coleman
Thomas James Bailey & Yessica Yamilet Chavez-Gutierrez
Claiborne Mastin White & Amanda Margaret Sibley
Thomas Harold Richardson & Heather Aley Austin
Frank Harrington Deutschmann & Cassandra Marlo Badini
Kevin Michael Crowley & Terry Lee Wolf
James Albert Gaski & Dawn Marie Tagariello
Joanna Mendoza & Adria Lynn Cotto
Brian Carl Girasoli & Lauren Smith Dickey
Robert Kevin Whelan & Evelyn Jean Gregg
William James Leonard Jr. & Rosemarie Elizabeth Amatore
Joshua Andrew Howell & Harriet Havemeyer Hurworth
Tristan Nicholas Ostronic & Tanya Marie Rotolo
John Robert Tamsin & Rebecca Hladki Tarbell
Daniel William O'Reilly & Kara Ann DelBuono
Benjamin William Edward Eaves & Kimberly Ann MacDougall

September

Daniel Francis Hodgdon & Kristyn Marie Ciccone
Nicolas Winocur & Kelley Jean Bostrom
Andrew Carlo Chonka & Rebecca Dawn Goss
Clayton Gregory Anderson & Rachel Lynn Grigorian
Gary James Everett & Constance Brewerton Carocari
Scott Fraser Cathcart & Kayla Marie Cyr
Christopher Scott Glaser & Kristin Erika Slyne
Andrew Charles Keiser & Courtney Lynn Conley
David Boyd Miles & Carol Ann Lyman
Quintin C. Velazquez III & Melanie Phan Hok
Kyle Lindley Candelet & Lyndsey Ann Neville
Clinton James Bradfield & Lara Juliette Kohler
Kevin James Hall & Elizabeth Amy Rhoades
Douglas Allan Cameron & Allyson Louise Gleason
William Joseph Lunney Kennedy III & Abigail Anna Elliott

Ronald Frank Oliwa
& Margaret Ann Kraemer
John Keefe Christoforo
& Maria Lynn Minkos

With Sympathy

We would like to express our
condolences to the families
of recently deceased
Old Lyme residents:

June
Joseph Edward O'Connor

July
Alan M. Graber
Raymond Clinton Northrop Jr.
Constance Szado Anderson
Margaret Marie Cleary

August
Lilliane Roy
Joan L. O'Connell
Cosimina Jean Marino

James Stackpole Herman
James B. Noyes
Peter Joseph Silvestri

September
Jeanne Raymond Aspinwall
James Joseph Mackenzie
Ernest H. Edgerly
Kathleen Bernadette Lauler
Alessandra (Wanda) Conduct
Richard W. Neigel
Louise Lewis Noyes

Conservation Commission

THIS SEASON IS THE TIME TO TEST FOR RADON!

As we move indoors, close the windows, and turn up the heat,
it is a good time to test your home for RADON GAS.

Radon is a colorless, odorless, invisible gas derived from uranium
in the soil and water. It is found both indoors and outdoors and
Old Lyme's Health Department has recorded a few homes with
elevated levels of the gas in the recent past. Next to smoking,
radon is the second leading cause of lung cancer.

Radiation levels are measured in picocuries per liter of air. The
EPA recommends that homes with radon levels of 4 picocuries

per liter or higher need remediation, which normally involves
sealing basements and/or venting basement air to the outdoors.
Well water can also contain radon which can be released during
showering. The highest levels are usually in the air in the
basement and lowest floors. Homes across the U.S. have an
average reading of 1.3 picocuries per liter of indoor air.

You can purchase test kits at your nearest hardware store for
around \$12. Just follow the directions.

Twelve dollars isn't too much to spend to make sure the air you
and your family breathe is safe. Invest in your family's health by
purchasing your Radon Test
Kit today! <https://www.epa.gov/radon/health-risk-radon>.

High Hopes

JOIN THE HIGH HOPES

VOLUNTEER TEAM:

General Orientation Volunteer Training

Winter Volunteer Opportunities available in
Horse care, sidewalking, equine therapy
programs, Special events & office work.
Learn how to be a part of the team. For
information, contact Marie Mareno,
mmanero@highhopestr.org.

High Hopes Offers Community Workshops for Non-Profit & Business Organizations seeking organizational and career enrichment.

High Hopes is PATH Intl. Premier
Accredited Center Internationally
renowned for training & education, and
a 501c3 Non Profit Center--Four Star
Charity through Charity Navigator.

Winter Lecture Series

January & February 2017

High Hopes offers full and half day lectures
conducted as part of the PATH International
Approved Instructor
Training Course. Lectures are designed

for the equine professional interested in
therapeutic riding, therapeutic riding
Instructor-In-Training, and currently
Certified Instructor looking for advancement
and continuing education hours.

Nonprofit Business, Development and Administrative Workshop February 16-17, 2017

An interactive two-day workshop designed
to help you meet your organization's man-
agement, fundraising and communication
needs. This workshop explores best practices
in non-profit management, offers practical
learning opportunities, case studies, and
networking with peers. Topics will include
identifying your target audience, using
social media tools and creating engaging
newsletters.

Strategies for Success in Volunteer Management - March 30-31, 2017

An interactive two-day workshop designed
to help you develop strategies and techniques
for managing volunteer resources,

recruitment, training and retention,
managing volunteers for maximum
effectiveness, volunteer program
evaluation, training, data tracking
and more!

A dynamic learning environment...
For registration & information, contact:
Patti Coyle, Training & Education
Director, pcoyle@highhopestr.org
(860) 434-1974, ext. 124.

PONY POWER

Learn2Ride, Field Trips & Pony Parties

High Hopes opens its doors and lesson
program several times a year to anyone in
the community who would like to learn to
ride, carriage drive or looking to get back
in the saddle. We host Field Trips for a
hands-on experience for your group.
Private Birthday Party Celebrations,
Holiday Parties and more.

For information, Sarah Carlson, scarlson@highhopestr.org, (860) 434-1974, ext. 115

Do You Have an AED in Your Building?

The HEARTSafe Community Award is designed to increase the awareness of the signs and symptoms of sudden cardiac events by ordinary citizens. Old Lyme has demonstrated its commitment toward ensuring that its residents and visitors receive the early lifesaving response proven to increase the chances of survival for victims of Sudden Cardiac Arrest (SCA) and has received this Connecticut Department of Public Health award for the second consecutive three-year term. The award is granted to communities that train and certify a certain percentage of their population in Cardio Pulmonary Resuscitation (CPR) and install and train people in the use of Automated External Defibrillators (AEDs) throughout the town.

A HEARTSafe Community promotes and supports CPR training in the community; public access to defibrillation through strategic placement of automated external defibrillators (AEDs) for use by public safety professionals and other community members; and early advanced care.

Emergency Medical Technicians (EMTs) and American Heart Association Instructors Colleen Atkinson and

Doug Lo Presti, Old Lyme residents and members of the Old Lyme Ambulance service, achieved and maintain the town's status by conducting extensive CPR training in Old Lyme and acquiring AEDs for interested businesses and public buildings.

To date, more than 2,000 Old Lyme residents and/or in-town employees have been certified or trained in CPR, with that number increasing every year. There are a number of public and private AEDs located in our town, most notably at the following locations:

Old Lyme Town Hall
LOL High School
LOL Middle School
Center School
Mile Creek School
Old Lyme PGN Library
SNAP Fitness
Healthy Addiction
L&M Primary Care
Black Hall Club
Old Lyme Country Club
Old Lyme Beach Club (Seasonal)
Soundview Beach Assn (Seasonal)
Town Woods Park (Seasonal)
OL Parks and Rec Dept (Seasonal)



Lymes' Senior Center
Old Lyme Police Department
Old Lyme Fire Stations
Old Lyme Ambulance Stations
Old Lyme Ambulance First Responders

If you have an AED and are not mentioned here or if you are interested in learning more about acquiring a unit or taking a CPR class, contact Doug or Colleen, or the First Selectman's office at 860-434-1605, extension 210.

Town of Old Lyme Social Services

It is the mission of the Town of Old Lyme Department of Social Services to enhance the quality of life and self-sufficiency of people in need of EMERGENCY NON-CURRENT financial services. We provide advocacy, planning, resources and deliver these services in partnership with public and private organizations. Services will be provided confidentially, courteously and promptly. No one will be discriminated against due to race, color, natural origin, religion, sex, age, disability or marital status.

Old Lyme Social Services offers help with information, paperwork and documentation processing for many of the state and federal programs available to residents. Social Services will act as an advocate for any Old Lyme resident and will make appropriate referrals to agencies and programs to help meet their needs.

We are currently accepting appointments for the Connecticut Energy Assistance Program, which may help income eligible households in paying for their heating costs during the winter months. Households are determined eligible based on state income and asset guidelines. We are the intake site for residents of Old Lyme. Applications are then processed through TVCCA. You may be eligible for benefits even if heat is included in your rent payment (depending on your income and rent amount.) Apply early in case funds run out.

For more information, or to schedule an appointment, please contact:

Jennifer Datum, Social Services Coordinator
(860)434-1605, ext. 228 or email: socialservices@oldlyme-ct.gov. Office hours are Mondays 12 – 4, Wednesdays 9 – 1 and Fridays 9 – 1 or by appointment.

**Election Results
Town of Old Lyme
November 8, 2016**

<u>Party</u>	<u>Presidential Electors</u>	<u>United States Senator</u>	<u>Representative in Congress</u>	<u>State Senator</u>	<u>State Representative</u>	<u>Registrar of Voters</u>
Democratic Party	Clinton and Kaine, 2,498	Richard Blumenthal, 2,688	Joe Courtney, 2,741	Ryan Henowitz, 1,515		Marilyn C. Clarke, 2,410
Republican Party	Trump and Pence, 1,999	Dan Carter, 1,667	Daria Novak, 1,552	Paul M. Formica, 2,820	Devin R. Carney, 3,018	Catherine Quine Carter, 2,051
Working Families Party		Richard Blumenthal, 220	Joe Courtney, 245	Ryan Henowitz, 81		
Independent Party				Paul M. Formica, 168	Devin R. Carney, 441	
Libertarian Party	Johnson and Weld, 142	Richard Lion, 27	Daniel Reale, 41			
Green Party	Stein and Baraka, 63	Jeffery Russell, 29	Jonathan Pelto, 49			
Write-In Votes						

MARK REEVES, BUILDER
860-388-3825

Winter is Great for Remodeling those Rooms!



New Homes • Whole House Remodels • Additions
Kitchens • Bathrooms • Basement Conversions
Siding & Windows • Entertainment Centers
Flooring • General Remodeling



Look me up on

CT LICENSE # 538583 & 10263
FULLY INSURED

MARKJREEVESBUILDER@COMCAST.NET
WWW.MARKREEVESBUILDER.COM



**HAVE A HEALTHY
HOLIDAY SEASON!**
thanks to a free, personal
Get Started Plan

Always open

Friendly support

7-DAY PASS Try us free

17 Liberty Way
Norwalk, CT 06857
860.691.1611

24 Hartford Road
Spartanburg, SC 29576
860.850.1010

anytimefitness.com

**ANYTIME
FITNESS**
Get to a healthier place.™

*Offer valid with a minimum 6 month membership agreement at participating locations only. Terms and conditions may vary based on applicable state laws and regulations. Health, fitness, and safety. Each location is independently owned and operated. ©2016 Anytime Fitness, Inc.

Lyme Academy College of Fine Arts

UPCOMING EXHIBITIONS:

Metamorphosis: Alumni with a Master of Fine Arts Degree

Exhibition on view through January 21, 2017

Monday through Saturday, 10 am – 4 pm

Jurors: Susanna Coffey, Todd Jokl, Patricia Miranda

Artists:

Karen Bartone	Paula Billups	Kay Clarke	Elizabeth E. Cook
Emilio Coyra	Charlie Cunningham	Jeremy Davis	Katie Fogg
Brad Guarino	Nathan Lewis	Barbara Marks	Yelizaveta Masalimova
Misty Morrison	Carmen Niichel	Adam Nowakowski	Christy Patrick Roger Patrick
Nathan Perry	Matthew Quinn	Michael Reeves	Jeremy Santiago-Horseman
Suzanne Siegel	Brian Stephens	Jessica Thornton	Jennifer Wheeler

Annual Student Exhibition

Opening Reception on February 3, 5 – 7 pm

February 3 – April 1, 2017

Monday – Saturday, 10 am – 4 pm

Senior Studio Exhibition

Opening Reception on April 7, 5 – 7 pm

April 7 – May 13, 2017

Monday – Saturday, 10 am – 4 pm




*Old Lyme
Visiting Nurse
Association, Inc.*

*At time of hospital discharge or
whenever in need of homecare
services, please call*

860-434-7808
or
860-434-9003

*Homecare license via Interim
Health Care of Eastern Connecticut*



Caliber Computing
Charles E. Delinks, Jr.
www.calibercomputing.com

Since 1993

Computer Systems & Networks

- Virus & Spyware Removal
- DSL & Cable Broadband
 - Network & Email Configuration
- Sales, Installations & Upgrades

**20 Homestead Circle
Old Lyme, CT 06371**
(860) 434-1926 phone
(860) 823-9250 cell
ced@calibercomputing.com

**LEW
THE
PLUMBER**

ARTHUR LEWIS
Owner

44 Center Beach Avenue
Old Lyme, CT
06371

**860
434-5862**

Connecticut Pastel Society – Purely Pastels

Exhibition on view June 15 – July 21, 2017

Monday – Saturday, 10 am – 4 pm

Upcoming Films:

Bridging the Arts

Curated film series co-sponsored by

Lyme Academy College of Fine Arts and The Kate

All films will be shown at the Kate on Tuesdays at 5:30 pm.

The film series is open to the public, but tickets are required.

January 24 – Picasso & Braque: Pioneering Cubism

February 28 – Double Feature – Two masters of American

Photography: Aaron Siskind and Harry Callahan

March 21 – Sol LeWitt: Wall Drawings

Upcoming Lectures:

Thursday, February 16, 2017

Lecture by Dr. Kevin J.F. Murphy,

Director, Tuscany Campus, University of New Haven

Reception at 6 pm. Lecture at 7 pm. | \$15

Limited Seating. Reservations Required.

RSVP: kbrady@lymefns.newhaven.edu

Visit our website for upcoming Spring lectures.

www.lymeacademy.edu

Upcoming Courses:

Visit our website for information about Spring Studio

Courses for Adults and Pre-College Students.

Registration opens January 15, 2017

Classes begin March 1, 2017

Upcoming Residencies:

WATERCOLOR: The Method of COLOR-Workshop

with David Dewey

Plein Air Watercolor Painting at the Norman Bird

Sanctuary, Newport, Rhode Island

May 15 – 19, 2017

Connecticut Pastel Society Workshops

The Figure in Pastels, with Margaret Dyer

June 14 – 16, 2017

The Painterly Portrait, with Alain Picard

June 15 – 16, 2017

To download previous issues
of Old Lyme Events
visit www.eventsmagazines.com
and download the issue you desire!

Exencial

Wealth Advisors™

Explore. Execute. Excel.



Providing Principled, Personalized Planning
&
Disciplined Investment Management guided
by research-based financial principles

Thomas P. McGuigan, CFP®
tmcguigan@ExencialWealth.com

Jean A. Wilczynski
jwilczynski@ExencialWealth.com

187-B Boston Post Road, P.O. Box 623
Old Lyme, CT 06371 (860) 434-5999
www.ExencialWealth.com

Investment Advisory Services offered through Exencial Wealth Advisors, a SEC-Registered
Investment Advisor

Connecticut Emissions Program

IRVING

147 Boston Post Road
Old Lyme, CT 06371
M-F 7 am - 5 pm ~ Sat 7 am - 12 noon
860-434-2265
www.allproautomotive.com

Lyme Art Association



Beverly Schirmeier, Red River Twilight, oil
Photographer, Beverly Schirmeier, year 2016

25th Annual Associate Artist Exhibition and Pulled and Pressed

On view: January 20 to March 10

Opening Reception: Sunday, January 29, 2 – 4 pm.

Landscape, portrait and still life paintings, as well as sculpture by Associate Artist members will be featured in the Association's front galleries. A special exhibition of hand-pulled prints showcasing a variety of printmaking techniques by members of all levels, along with the Stonington Printmakers, will be on display in the Goodman gallery. Admission is free but a \$5 donation is suggested. Lyme Art Association, 90 Lyme Street, Old Lyme (860)434-7802; lymeartassociation.org

Contemporary Look, LAA Faculty, Holding Still, and Industrious America

On view: March 17 to April 28

Opening Reception: Sunday, March 26, 2 – 4 pm.

Four exhibitions, each with a different theme, all by member artists: 1) representational works that push the boundaries and lean toward the abstract, 2) a special exhibition of work by the talented LAA faculty, 3) still life paintings, and 4) scenes of work and industry. Admission is free but a \$5 donation is suggested. Lyme Art Association, 90 Lyme Street, Old Lyme (860)434-7802; lymeartassociation.org.

Lymes' Youth Service Bureau

59 Lyme Street, Old Lyme, CT 06371
860-434-7208
www.lysb.org

PLAYGROUPS at Lymes' Youth Service Bureau

LYSB offers a variety of playgroups based on child's age and interest. For a full description of all our groups visit www.lysb.org. To register visit www.lysb.org or call LYSB 860-434-7208 x0.

Back to Nature Playgroup at LYSB

Mondays 9:30 to 10:45 am February 27 to April 3, 2017, 6 weeks \$48. Led by Charity Archbald.

Weekly themes and info on our website.

Co-op Playgroup at LYSB

Tuesdays, 10-11:15 am January 10 to February 14, 6 weeks free. Parents would you like a break, time to chat with a friend, or listen to a guest speaker without your child in your lap? At LYSB's Co-op playgroup children will meet in Mimi's Place to play. Parents have the option to meet in the Activity Center adjacent to your child or run a quick errand. Parents

will be expected to work on a rotating schedule to help care for children in Mimi's Place.

Babies Group at LYSB

Free. For new and expectant parents with babies prenatal to age 12 months.

Session I: Thursdays 12:30 to 1:30 pm.

January 5 to February 2, 4 weeks free.

Jan. 5 Meet & Greet; Jan. 12 – Topic of Your Choice; Jan. 26 – Nursery Rhymes; Feb. 2 – Baby Signs.

Session II: Tuesdays 10– 11:15 am.

Feb 28 – Meet & Greet; March 7 – Sleep; March 14 – Topic of Your Choice; March 21 – Nutrition;

March 28 – Topic of Your Choice;

April 4 – Boo Boo Bunny Craft

Nursery Rhyme Playgroup

Wednesdays, 9:30-10:40 am

January 4 to February 15, 7 weeks \$56.

Led by Charity Archbald.

Different themes and activities each week.

Snowy Sensory Playgroup

Thursdays 9:45 to 11 am. January 5 to February 2, 5 weeks \$40. Led by Melanie

Lee. A new fun theme and activity each week.

Musical Sensory Group

Thursdays 9:45 to 11am February 9 to March 9, 5 weeks \$40. Led by Melanie Lee. Feb 9 – March 9- 5 weeks \$40.

Music With Margie Wednesdays 10:45-11:10 am through June 7 (note: no class on February 15, 22, March 1, April 12).

Music with Margie is a “joy-based” music and movement preschool program for young children based on the simple truth that children learn and retain knowledge through PLAY! Enthusiastically performed, written, and taught by Connecticut-born Margie Warner.

Weekly topics include everything from families to weather to dinosaurs – all in a fun, safe environment. Program is free due to grant funding but you must pre-register.

Infant & Baby Massage

Thursdays, February 9 to 23, 12:30 to 1:30 pm, 3 weeks, \$20. Learn to massage your

baby with the help of an IAIM Certified Infant Massage Instructor (CIMI). Pressure, rate, rhythm, the length of the massage, respect, and bonding, why babies cry, babies' body language, relaxation, and parent empowerment are some of the skills and topics you will learn. Pre-register.

Youth Advisory Council (YAC)

Every Wednesday 7-8 pm, starting September 14. YAC is a high school community service club that participates in a variety of fun projects and activities throughout the year. All high school students in L/OL are welcome to join us any Wednesday night! Just show up, fun is guaranteed!

Middle School Afterschool Program

Every Tuesday & Thursday 2:15-4 pm, starting September 6. This is a drop in program and a permission slip is required. Hang out with your friends while listening to music, playing ping pong, games, Wii, crafts & snacks. Students can walk to LYSB from the Middle School, and can get a pass for the LOLMS late bus. Registration fee: \$30/year. Register!

The Mask You Live In

Thursday, February 23 at 7 pm at Lyme- Old Lyme Middle School. A community screening of this thought-provoking documentary, followed by a facilitated discussion. The film explores how our culture's narrow definition of masculinity is harming our boys, men and society at large and unveils what we can do about it.

Free and open to the public.

Boys Council

Four Mondays, January 23 to February 13. Free. A strengths-based group approach to healthy masculinity development for boys and young men ages 9-18, focusing on boys' natural strengths and broadens their understanding about being a young man in today's world.

Sitter Safety Class

Four Mondays: March 6, 13, 20, 27 2017 2:15-4 pm. An intense sitter safety and training course appropriate for babysitters, big brothers and sisters, and children staying home alone for the first time. This course touches on a variety of safety skills such as basic first aid, fire safety, and 911 skills. Fee of \$50 includes supplies, snacks, and guest speakers. Pre-register!

CPR For Babysitters

Monday, April 3, 2017, 2:15-3:45 pm. Add this valuable class to your LYSB babysitter's course and learn how to save a life! Learn CPR and how to clear a blocked airway in children and infants. Parents want to hire babysitters who know CPR and can help kids who are choking. Instructors will teach you everything you need to know to provide lifesaving care during a cardiac or choking emergency in this 2-hour class. Class cost is \$45 and awards a Certificate of Completion.

continued on page 16

TRUST YOUR CAR TO THE REPAIR SHOP MORE PEOPLE TRUST...

We are a full service garage dedicated to quality work and service.

"The Only Call You Need For Quality Service & Repairs"

AUTO SERVICE of Old Saybrook, Inc.

**We have Senior Citizen Day Every Day!
We Offer 10% OFF Repairs and Service up to \$50.00 Maximum.**



We employ ASE
Certified Technicians

Servicing Domestic & All European Cars Including
Mercedes, BMW, Jaguar, Audi, Saab, Volvo & VW



860-388-6838

From oil changes & scheduled maintenance to engine repair or replacement, we can provide complete mechanical & electrical service to your vehicle.



**4 JADE COURT • OLD SAYBROOK
HOURS: MON. - FRI. 8 a.m. - 5 p.m.**



Youth Service Bureau ... continued from page 15

Engineering After School With Engineering Imaginations Llc For Aspiring Young Engineers!

For Ages 5-8: March 9 to April 20, 2017 4-6 pm; For Ages 8-14: January 19 to February 23, 2017, 4-6 pm Discover the spectacular world of engineering through hands-on, minds-on activities! Students apply problem solving and critical thinking skills to explore our S.T.E.A.M. (Science, Technology, Engineering, Architecture, Mathematics) based curriculum. Participants will use a variety of mediums such as recycled materials, salvaged motors and gears, balsa wood, LEGO®, and more. With activities ranging from bridges, to rockets, to green engineering, participants are sure to have a blast while learning fundamental engineering terms and concepts along the way! This program is open to students from all area towns. Students can take the bus from Mile Creek and Lyme Schools directly to LYSB. Fee \$120/ six week session. Register!

Sewing Workshop: Quilts!

Five week sessions from Tuesday January 17 to February 7, 4-6 pm for boys and girls 8 years and older. Learn how to sew on a machine and make fun projects. No experience necessary. All materials and machines provided. Fee: \$100 With arts educator Claudia Mathison. Take the bus to LYSB.

American Girl Valentines Tea

Sunday, February 12th, 1-3 pm. Join us for a festive American Girl Tea Party at the LYSB! Design valentine crafts, play traditional games and have a tea party with china cups and tea cakes! Time for party games and stories too. Bring a favorite doll if you wish! For grades K and older. Fee \$20. Pre-register.

Holiday Wine Gifts

With the wide variety of wines from different countries picking out a gift can be interesting and fun. If the person on your list likes Pinot Grigio, surprise them with Vernaccia or Vermentino from Italy. Similar to P. G. they have good acidity and a crisp finish.

If you need something fruitier, the wines from Vouvray are made of Chenin Blanc. This style will serve your purpose. In the sweet realm you will need to go with a Moscato or an Auslese Riesing from Germany. There are many choices for choosing

a light red aside from Pinot Noir. Cru Beaujolais, which represent one of the 10 villages in Beaujolais, are made of the Gamay Grape. It's light and lively with medium fruit. These wines are better quality than a Beaujolais Village. Slightly more zesty would be something from the Southern Rhone Valley, also from France. If your looking for a bolder red try a California Cabernet Sauvignon, rich with soft tannins. Not to mention a French Bordeaux, Rioja from Spain and not to leave out the big dry wines of Barolo in Piedmont, and Brunello in Tuscany, Italy.

Of course don't forget these other bold and interesting wines: Red Zinfandel from California, Amarone's from Italy, Malbec's from Argentina, Shiraz from Australia and Red blends from around the world.

There's a great big world of wine out there. Happy shopping and don't forget to pick one or two for yourself!

Happy Holidays!
Art LiPuma
SeaSide Wines

Mentoring Project

LYSB and the Lyme-Old Lyme Middle School are looking for adult mentors to work with middle school students on a weekly basis in the school setting. If you are interested in making a difference in the life of a young person, please contact the LYSB to learn more about the mentoring project.

Lyme-Old Lyme Prevention Council: CASFY: Community Action for Substance Free Youth

Meets on the 1st Tuesday of the month at 7 pm at LYSB. Our mission is to prevent and reduce alcohol and other drug use among youth by collaborating with the community to raise awareness, modify social norms, educate youth and adults, initiate policy change and promote healthy activities. Our group includes parents, youth, school administrators, police, and community members. Join us at our next meeting!

Survivors of Suicide Loss Support Group of Southeastern CT

Joining hands as we walk on this journey together towards healing one breath at a time. We are a group of survivors, together to offer support, comfort, and understanding. Our group provides an atmosphere of acceptance for exploring feelings that are often not understood by others. It offers a chance to share helpful resources, and to give and get support through the long grief process. Meetings: 1st & 3rd Thursday at 6:30 pm at LYSB.

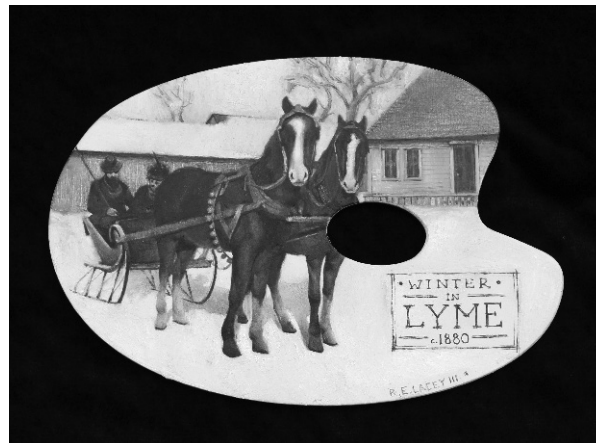
Youth Job Bank

Do you need a babysitter? Yard work needing to be done? Dog walking? Odd Jobs? Call LYSB to hire local youth who are interested in working for you! L/OL youth in grades 6-12 interested in adding your name to our Job Bank: fill out an application on our website.

Florence Griswold Museum



Rick Lacey III, Winter in Lyme, 2016. Oil on wood palette



Matilda Browne, Peonies, c. 1907,
Oil on board, 11 x 14 inches.

During Magic of Christmas, on view through January 8, visitors of all ages will enjoy Miss Florence's Artist Trees, designer Fantasy Trees, and the Florence Griswold House decorated for a 1910 Christmas. Miss Florence's Artist Trees feature nearly 200 artists from all over the country who have donated works to this one-of-a-kind tradition.

Through January 29, see how ten photographers trained their lenses and imagination on the Florence Griswold Museum to create the exhibition In Place: Contemporary Photographers

Envision a Museum. The exhibition brings together artists Tina Barney, Marion Belanger, Adrien Broom, Kate Cordsen, Peter Daitch, Alida Fish, Ted Hendrickson, Sophie T. Lvoff, James Welling, and Tom Zetterstrom. The site of the Florence Griswold Museum has been a place of creative inspiration to artists for over a century. The painters of the Lyme Art Colony, who stayed at "Miss Florence's" boardinghouse beginning in 1899, turned her property and the surrounding landscape into subjects of iconic works of American art.

continued on page 18

Come See What's On at Lyme Shores



NEW TENNIS CLINICS & SOCIALS
NEW DROP-IN PICKLEBALL SESSIONS
NEW FITNESS CLASSES

AFTER-SCHOOL TENNIS PROGRAMS FOR KIDS

Eight-week sessions throughout the school year

Big Shots (ages 4-6)

Tue. or Thu., 4-5pm

Future Stars (ages 7-9)

Tue. & Thu., 4-5pm

Team Connecticut

Mon. & Wed., 5:15-6:30pm
For competitive junior players

Local Excellence (ages 10-12)

Tue. & Thu., 4-5pm

Tournament Tough (ages 13-15)

Mon. & Wed., 4-5:15pm

High School

Boys- Fri., 3:30-5pm
Girls- Sat., 9-10:30am

ADULT TENNIS, PICKLEBALL & FITNESS

Beginner Tennis Drills

Wed., 5:30-7pm

Adv. Beginner Tennis Drills

Tue., 9-11am, 11am-12pm

Intermediate Tennis Drills

Mon., 10:30am-12pm

NTRP Tennis Drills

Sat., 10:30am-12pm, All levels

Cardio Tennis

Wed., 7-8pm, All levels

Tennis Round Robins/Socials

Tue., 9-11am, Fri., 12-2pm, 7-9pm

Drop-in Pickleball

Mon., 1-4pm, Thu., 9:30am-12pm

Strength Training

M/W/F, 10am, W/F, 8am

Circuit Training

Sat./Sun., 8am

Stability Ball

Mon., 8am

Yoga

M/W, 11am

Zumba

Sat., 9:15am



(860) 739-6281

www.lymeshores.com

22 Colton Road
East Lyme, CT 06333

**LYME
SHORES**
TENNIS & CONDITIONING CENTER

Florence Griswold ... continued from page 17

With this history in mind, this select group of photographers was asked to focus their lenses and imagination on the Museum and create work that reacts to the historic site's landscape, collections, and story. "While motifs of art, history, and landscape emerge in the photographers' works, the variety of their expressions articulates how multifaceted the discipline of photography is today," notes Amy Kurtz Lansing, Curator at the Florence Griswold Museum. "Visitors will find a range of art, from representational to abstract, from film to video, and from historical to digital processes."

From February 10 through May 28 the Museum presents, Matilda Browne: Idylls of Farm and Garden, the first ever museum exhibition of Lyme Art Colony artist Matilda Browne. The only woman accepted as a peer by the male artists in Old Lyme, she was given the honor of being invited to paint a pair of door panels in the Florence Griswold House.

Browne's talent was apparent from an early age. By the time she was nine, she had begun informal study with her neighbor Thomas Moran. As an adult, she exhibited widely and won prestigious awards. In Greenwich, where she lived most of her adult life, she was a founder of the Greenwich Society of Artists and exhibited in all of their annuals from the first, in 1912, through 1931. The exhibition and its accompanying catalogue will enable the rediscovery of a significant artist.

Throughout her career, Browne favored two themes: animals and flowers. Visitors to the exhibition will trace her shift in style from highly accomplished academic depictions of farm animals to atmospheric Barbizon-influenced canvases. Her Impressionist style is most evident in sparkling paintings of gardens as well as in still lifes of lush bouquets.



ZELEK ELECTRIC CO.

- BUCKET TRUCK SERVICE
- MOTOR CONTROLS
- LANDSCAPE LIGHTING
- TELEPHONE WIRING
- GENERATOR INSTALLATIONS
- SALES & SERVICE
- UNDERGROUND WIRING
- FIRE ALARM SYSTEMS
- LIGHTING CONSULTANT
- TROUBLE SHOOTING
- SOLAR ELECTRIC SYSTEMS




CT LICENSE #103314

**RESIDENTIAL • COMMERCIAL
MARINE • INDUSTRIAL**


*"BIG ENOUGH TO DO THE JOB,
SMALL ENOUGH TO CARE"*

860-434-9726

OLD LYME, CT www.zelekelectric.com



CONSTRUCTION CO., INC.
60 PLAINS ROAD, ESSEX, CT 06426
860.767.8072



- Custom Homes
- Additions
- Full Remodeling Services
- Custom Millwork
- Window Replacement

Fully Insured
New Home Lic. #170
Remodeling Lic. #523107
www.bogaertconstruction.com

Streetlights

REPORTING STREETLIGHT PROBLEMS

Please phone Michele Hayes
in the Selectman's Office
at the Town Hall
(860-434-1605, ext. 212)
to report a streetlight outage or
streetlight issues that you may notice.

When reporting a streetlight, please make
note of the pole location and pole number.
Thank you!

Streetlight issues on private roads
should be reported to your association.
The Town is not authorized to address
the lights on private roads.

OLD LYME TOWN HALL • 860-434-1605
www.oldlyme-ct.gov

Old Lyme Municipal Departments

Department	Contact	Phone
Animal Control	Lynn Philomen	434-1605 x244
Assessor	Walter Kent	434-1605 x218
First Selectwoman	Bonnie A. Reemsnyder	434-1605 x211
Board of Selectmen	Mary Jo Nosal	434-1605 x212
Board of Selectmen	Skip Sibley	434-1605 x212
Building	John Flower	434-1605 x230
Emergency Management & Fire Marshal	David Roberge	434-1605 x231
Finance Director	Nicole Stajduhar	434-1605 x232
Harbormaster	Harry Plaut	434-1605 x212
Health Office		434-1605 x214
Ledge Light Health District		860-448-4882
Information Technology	Ruth Roach	434-1605 x237
Parks and Recreation	Don Bugbee	434-1605 x235
Police	TFC Gary Inglis	434-7080
Probate Court	Hon. Jeffrey McNamara	739-6052
Public Works	Ed Adanti	434-1605 x243
Registrar of Voters* *Effective Jan 2017	Sylvia Peterson & Don Tapper Catherine Quine Carter & Marilyn C. Clarke	434-1605 x226
Senior Center	Stephanie Lyon	434-1605 x240
Social Services	Jennifer Datum	434-1605 x228
Tax Collection	Judith Tooker	434-1605 x216
Town Clerk	Eileen Coffee	434-1605 x221
Treasurer	Tim Griswold	434-1605 x232
Zoning Enforcement	Keith Rosenfeld	434-1605 x225
OTHER AGENCIES		
Library/Passports		434-1684
School District #18	Superintendent of Schools	434-7238
Youth Services Bureau	Mary Seidner, Director	434-7208



Old Lyme Shopping Center
Exit 70 off I-95, Halls Road, Old Lyme
860-434-1455 or 860-434-3335

Serving Sunday Breakfast
10 am - 3 pm
Lunch Specials 11 - 3
At the Bar \$6 Lunch, \$2 Drafts



FRESH LOCAL SEAFOOD

**50%
ANY
ENTREE!**

Buy One Entree at
Regular Price,
Get 2nd of Equal or
Lesser Value 50% Off
With this coupon. One coupon
per table. Excludes tax and
gratuity. Not valid with other
offers or on holidays.
Expires 1/2/2017

**\$10
OFF
TOTAL
BILL!**

Of \$50.00
Or More
With this coupon.
One coupon per table.
Excludes tax and gratuity.
Not valid with other offers
or on holidays.
Expires 1/2/2017

**\$5
OFF
TOTAL
BILL!**

Of \$25.00
Or More
With this coupon.
One coupon per table.
Excludes tax and gratuity.
Not valid with other offers
or on holidays.
Expires 1/2/2017

Steaks • Seafood • Pasta • Sandwiches and More!



CONNECTING YOUR CONNECTICUT!

Public Transportation for all ages serving
Chester, Clinton, Deep River, East Haddam,
Durham, Essex, Haddam, Killingworth, Lyme,
Old Lyme, Old Saybrook & Westbrook

Medical Transportation to Middletown

Connections to Southeast Area Transit buses in New London,
CT Transit New Haven in Madison, Middletown Transit
and CT Transit Hartford in Middletown

Call 860.510.0429
www.9towntransit.com



9 Town Transit is Operated by the
Estuary Transit District

Studio 80 + Sculpture Grounds



Tres Gatos, which is now installed in Palm Desert, California.



Studio 80's Sculpture Grounds look stunning in snow!



Reflections in the Sculpture Grounds.

See Gilbert Boro's Work at Studio 80 + Sculpture Grounds in Old Lyme ... or Palm Desert, California!

Gilbert Boro, a sculptor who has been deeply involved in the arts for more than 50 years, not only makes his home on Lyme Street in Old Lyme, but also has his studio there where he creates abstract sculptures that regularly draw national and international acclaim. Boro's beautifully landscaped 4.5 acre grounds are open to the public daily from 9 a.m. to 5 p.m. at no charge. With over 100 sculptures located on a variety of gardens and courtyards, this en plein air art experience allows visitors to enjoy original large-scale contemporary sculpture in an intimate, engaging setting. Visitors are encouraged to explore the grounds and interact with the works, per-

haps turning kinetic elements or exploring the structure of open pieces.

But Boro exhibits much farther afield than Old Lyme.

Out in Palm Desert, California, you can find an art destination widely noted to be one of the top five in the United States. El Paseo Street is the premier shopping area in Palm Desert, which is located in the Coachella Valley in southern California. Each year, the City of Palm Desert hosts the acclaimed El Paseo Exhibition, which features 18 sculptures set on lighted pads found on the medians of the famous street. This remarkable exhibition runs along a one and a half mile stretch of prime retail properties. Tres Gatos, a piece by Boro, has been selected for the exhibition by the city's Art in Public Places Commission and will be on display there for two years.

The piece was installed this past November and a dedication for the whole exhibition is planned for January 2017. The Ramey Fine Art Gallery, which is located on El Paseo Street close to the outdoor site of Tres Gatos, also has several of Boro's pieces on display in its galleries. So whether you are in Old Lyme, Conn., or Palm Desert, Calif., take a little time out of your day to enjoy Boro's unique sculptures.

The Sculpture Gardens at Studio 80 are located at 80-1 Lyme Street in Old Lyme. Contact the Studio 80 office at 860.434.5957 or visit www.sculpture-grounds.com for more information or to sign up for Studio 80 newsletters and view a listing of special events throughout the year.

Old Lyme Phoebe Griffin Noyes Library

Old Lyme Phoebe Griffin Noyes Library
2 Library Lane, Old Lyme, CT 06371, 860.434.1684

The Old Lyme—Phoebe Griffin Noyes Library continues to fulfill its mission to inspire lifelong learning and discovery in a welcoming place with exceptional resources, programs, and services. From developing fun, interactive storytimes for babies and toddlers to hand-delivering novels to homebound patrons, the Library continues to provide opportunities for residents of all ages to learn and grow. Here is a selection of our upcoming events:

CHILDREN'S EVENTS

Julie Bartley/Children's Librarian
jbartley@oldlyme.lioninc.org / 860.434.1684 x114
Toddler Time: Every Tuesday at 10:30 am

Baby Time: Every Thursday at 10:30 am

Sweet Beats Family Music with Eleanor Robinson: Second Wednesday of the month (1/11, 2/8, 3/8) at 5:30 pm

Picture Book Bingo: Thursday, January 5, 3:30 pm

Audubon Adventurers! by Connecticut Audubon Society's Roger Tory Peterson Estuary Educators: Tuesdays, Jan. 17, 24, 31 and Feb. 7 and 14, 3:30 pm

Gross Me Out @The Library: Thursday, January 26 at 3:30pm

Black History Month Scavenger Hunt: Thursday, February 23 at 3:30 pm

Read Across America Day!: Thursday, March 2 at 3:30pm

Early Audubon Adventures: Wednesday, March 15 at 10:30am

Beauty and The Beast Party: Tuesday, March 28 at 3:30pm

Take Your Child to the Library Day: Wednesday, February 8

from 10:00 am-5:30 pm

For complete details, visit our website at
www.oldlyme.lioninc.org.

YOUNG ADULT EVENTS

Nike Desis/Young Adult Librarian
ndesis@oldlyme.lioninc.org 860.434.1684 x116

OLPGN's Teen Scene has a little something for everyone, come check us out! Follow us on Instagram (@olpgn_library) for reminders, new book features, contests, and plain old fun... Have an idea for a program? Tell us! Stop in, or send an email to Nike, YA Librarian, at ndesis@oldlyme.lioninc.org.

Minecraft Meet-Up: Thursday, January 12 at 3 pm
(Pre-registration is required)

Anime Club: Third Thursday of the month (1/19, 2/16, 3/16)
at 3pm (Registration is strongly encouraged.)

Graphic Language!: Fourth Tuesday of the month
(1/24, 2/28, 3/28) at 4 pm

Drop-in Valentine Card Making: Monday, February 13
from 2-5 pm

DIY Iron-On Patches: Thursday, March 9 at 3 pm

ADULT EVENTS

Katie Huffman/Director
khuffman@oldlyme.lioninc.org / 860.434.1684 x110

Contemporary Classics Evening Book Discussion:
First Monday of the month (1/2, 2/6, 3/6) at 7 pm

Phoebe's Morning Book Chat: Second Thursday of
the month (1/12, 2/9, 3/9) at 11:15 am

Film Movement: Fourth Thursday of the month
(1/26, 2/23, 3/23) at 2 pm

Additional adult events for January - March 2017 are currently being planned. Be sure to check our website at www.oldlyme.lioninc.org for more events and complete details.

SIGN UP FOR OUR E-NEWSLETTER

at www.oldlyme.lioninc.org. The Library does not distribute or sell our patron email list to any commercial or nonprofit business. We use your email solely for contacting you about library programs, special events and announcements.

PHOEBE'S BOOKCELLAR

Wednesdays 10 – 6 pm

Saturdays 10 – 2 pm

Contact us at 860-434-1684 x117

The BookCellar is a highly successful used book store - Old Lyme's only bookstore - managed by the volunteer Friends of the Library and housed on the Old Lyme Library's lower level.

Please stop by to shop, drop off book donations, or become a volunteer. Choose from thousands of books of all genres, including hard cover and paperback fiction, art, business, classics, cooking, language, literature, music, parenting, pets, sports, world history, books for children, young adults. We also have a large collection of Rare & Collectible books, DVDs & CDs.

When you're in the Library lobby, be sure to browse the on-going sale of books located on the cabinets across from the Circulation Desk.

Every dollar earned at the BookCellar goes directly to support the Library's programs, collections and equipment.



The Lyme-Old Lyme Chamber of Commerce

Lyme-Old Lyme Chamber of Commerce Hosts Monthly Meetings and More Throughout Winter Season

The Lyme-Old Lyme Chamber meets on the third Wednesday of each month to offer the opportunity for business professionals to network with each other and discuss ideas related to the economic vitality of our towns. Please join us at any or all of these meetings – there are four dinner meetings during the year and the remainder are 'Business After Hours' events for which no charge is made.

Meetings in the first quarter of 2017 will be held on the following dates:

January 18, February 15 and March 15.
Check the Chamber website at www.VisitOldLyme.com for details of speakers and the location for each meeting.

If you are thinking about becoming a member, please come to any meeting as a visitor. We would be delighted to welcome you and show you how much membership at just \$50 per year has to offer and how it can benefit your business.

The Chamber is collaborating with local realtors, who are also Chamber members, to launch a new initiative

titled, "Wake Up to Lyme-Old Lyme." This program is a Chamber-wide effort to introduce prospective newcomers to and new residents in our towns to the businesses in our area. Donations are sought for the Welcome Baskets such as coupons, brochures, incentives to visit your business, or specialty items with logos. If you would like to participate in this program, please drop off your box of promotional incentives (25-50 of each item) at Nightingales Acoustic Café on Lyme Street. For more information or to join the planning team, email gstevens@musicnowfoundation.org

continued on page 22

Lyme-Old Lyme Chamber ... continued from page 21

Looking ahead, on Saturday, June 17, 2017, the Chamber will be hosting another Osprey Festival, which interweaves community, art, music and nature. The Festival offers a limited number of vendor spaces so if you are

interested in reserving one, please contact Chamber President Mark Griswold at grismark@aol.com as soon as possible. Also, contact Mark regarding Festival sponsorship opportunities – there are many choices available.

For the latest information on the Chamber, please visit our website at www.VisitOldLyme.com and, as always, don't forget to Buy Local to support businesses in our community!



The Lyme-Old Lyme Volunteer Connection

This Winter Help Strengthen Our Community by Volunteering

This fall the Volunteer Connection welcomed the Old Lyme EMS onto the system. The residents of Old Lyme are fortunate to have a dedicated team of first responders that provide 24/7 coverage for emergency medical care. Old Lyme EMS' greatest need is ensuring that they have a constant base of dedicated individuals who are willing to make the commitment in time and effort to become certified as Emergency Medical Technicians or Medical Response Technicians and then volunteer on a regular basis to respond to ambulance calls.

If you are interested please contact them; specific information may be found on the Lyme – Old Lyme Volunteer Connection's website <https://volunteer.truist.com/ollvolunteer>.

The Old Lyme EMS is one of thirty-three local agencies now participating in the Volunteer Connection. There are numerous interesting opportunities to serve the many local non-profit organizations that carry out the work that is so important to our community. In addition to opportunities like the EMS that require significant training and a regular commitment, there are many others listed that suit a wide range of interests and can accommodate busy schedules.

The Lyme – Old Lyme Volunteer Connection is a free community resource, thanks to a generous grant from the Karter Richardson Foundation and the effort of volunteers. The Volunteer Connection <https://volunteer.truist.com/ollvolunteer> is a one-stop-shop for community service opportunities. We continue to work towards making this important resource as comprehensive as possible for organizations located in or providing services to the towns of Old Lyme and Lyme. If you are the leader of an organization that would like to participate, contact Sophie Christiano, the high school student who manages and administrates this website, at ollvolunteer@gmail.com.

CT License
E1-123441

SICURANZA ELECTRIC, LLC



John Sicuranza
Owner / Electrician

www.SicuranzaElectric.com
email: seco4343@aol.com

860-434-4343

Specializing in all Residential
& Commercial work

<input checked="" type="checkbox"/> Service Upgrades	<input checked="" type="checkbox"/> Troubleshooting
<input checked="" type="checkbox"/> Generators	<input checked="" type="checkbox"/> Network Cabling
<input checked="" type="checkbox"/> Surge Suppressors	<input checked="" type="checkbox"/> Landscape Lighting
<input checked="" type="checkbox"/> Smoke / CO Detectors	<input checked="" type="checkbox"/> Marine Wiring

Are you the parent of a child living with epilepsy?

The Epilepsy Foundation of CT invites you to join their support group in Branford CT. This will be a gathering of parents to talk about the challenges, fears, and coping tactics in caring for a child with epilepsy.

The support group will be held the fourth Wednesday of each month from 6:30 to 8 pm. Location will be at St. Therese Church Parish Center, 105 Leetes Island Rd, Branford, CT.

For more information please call the Epilepsy Foundation of CT at 860-346-1924.



HOD #310 & HOD #909 CT Contractor Lic. #S1-303161

ARE YOU READY FOR WINTER?

- 24/7 Emergency Service
- Automatic Fuel Delivery
- Furnace/Boiler Service & Installation
- Kohler Generator Service & Installation
- Gas Fireplaces
- Water Heaters
- Price Programs
- Service Plans
- AC Service & Installation

35 William F. Palmer Rd., Moodus, CT 06469

860-873-3876
888-388-2497
www.dutchoil.com



William Pitt

Sotheby's
INTERNATIONAL REALTY



303 Joshuatown Road, Lyme
\$489,000 | 3 BR | 2.1 BATH
 If you can think of a lovely "English Country Cottage", this is it! Located on Shippee Hill, the highest point on much revered Joshuatown Road, with several million dollar+ homes nearby.



97 Bone Mill Road, East Haddam
\$425,000 | LISTED AND SOLD IN 30 DAYS
 "Hungerford Brook Hollow" in the Hadlyme district of East Haddam, a perfect country retreat with a pristine and wonderful 2 bed and 2 bath c1885 Cape.

Roger Parkman
 203.676.1061
rparkman@williampitt.com



rogerparkman.williampitt.com

ESSEX BROKERAGE | 13 MAIN STREET | 860.767.7488
 OLD LYME BROKERAGE | 103 HALLS ROAD | 860.434.2400
 65 COUNTRIES | 20,000 SALES ASSOCIATES | 850+ OFFICES
Each Office is Independently Owned and Operated ©

LAYSVILLE
 HARDWARE

A Complete Line of Hardware & Paint Supplies

- Power Tools • Diesel • Lawn & Garden Supplies
- Gas Grills • Electrical & Plumbing Supplies
- Builder's Hardware • Blades Sharpened
- Glass Cut & Window Repairs
- Rentals: Power Washers • Paint Sprayers • Rug Shampooers

860.434.7727
 171 Boston Post Rd, Old Lyme

Sign up for savings with our E-Newsletter

laysvillehardware.com



Good hearing is
PRICELESS



Is it time to get your hearing checked?

County Hearing and Balance

OLD SAYBROOK
 900 Boston Post Road
860-388-0022

WATERFORD
 Lowe's Plaza
 167 Parkway North
860-443-6944

Call us for a Free Initial Consultation
 All services by Doctors of Audiology
www.countyhearingandbalance.com

Holiday Planning

With the holidays approaching, it is time to think about what we are teaching and sharing with our children. Soon, Black Friday ads will be telling us what will make our kids happy. We will be inundated with marketing about the newest toys, electronics, and fashions. It's so easy to get caught up in searching for the perfect gift, hopefully at the best discount! But take a moment to think back to your childhood holidays. What do you remember most? What is your favorite holiday memory? It probably has nothing to do with a toy you received or the newest clothing trend. Most of us, when asked, speak of memories of sitting around the family dinner table, swapping jokes and stories; family traditions of decorating the house or tree; preparing food or homemade gifts;

attending an annual holiday event; or just having time off from school and spending that time with family and friends. Few of us even remember the gifts we received, but we remember the excitement of gathering together to open them - it was more about sharing the experience and knowing we'd been thought of with care. When you plan your holidays this year, give your children the lifelong gifts that have held meaning for you - family traditions, time spent together, and the love that shines through the experiences.

Nancy Randall, Psy.D.
East Lyme Psychological Associates

Spend Some Time Thinking About the Future

As 2016 draws to a close, take some time to ponder the future and discuss your thoughts with family and friends. Ask: What is important to me? What causes am I passionate about? Do my actions reflect that?

Charitable giving is one way to support your favorite causes. Our complex tax code often provides financial incentives for making charitable gifts. While future tax benefits don't need to be your only

reason for charitable giving, they can offer some guidance when evaluating different charitable giving strategies.

Suppose you own stocks, mutual funds or other investments with a taxable gain that you've held for a year or longer. If you sell the mutual fund shares, you may pay tax on that gain, so the full value will not be available to you. If instead you donate the mutual fund shares directly to a charity, the charity can sell them and pay no tax

on the gain - allowing the full amount to be available for use by the charity.

Further, if you itemize your deductions, you can deduct the full value of the gift if you've held the shares longer than one year, allowing you to reduce your taxable income and taxes owed as well.

Jean Wilczynski and Tom McGuigan,
CFP®, Exencial Wealth Advisors




Serving the CT River Valley Since 1924
Heating Oil Dealer #252
P-203832 / S-303213

**Your Source for BioHeat®
the "natural heating oil"**

- **WATER SYSTEMS**
Pumps, Tanks, Heaters, Filters
- **FUEL OILS, PLUMBING
AND HEATING**
High Efficiency Boilers, Solar Hot Water
Service and Repairs, Remodeling, Renovations

860-873-8454
www.mausandson.com



**East Lyme
Psychological
Associates**

Psychological & Psychiatric Services

Serving adults, adolescents, children
and families · Individual, couple,
and family therapy

Psychiatric assessment and medication management

Adoption competent therapists work
with adoptees and/or families

Psychological evaluation for adoption
related issues, personality functioning,
and treatment planning

29 Chesterfield Road, East Lyme, CT
860-739-6974

Distribution of YPSM Greater New Haven YP Directory

As you may already be aware, the directories are 100% recyclable.

While new directories are being delivered, this is typically a time when residents recycle their outdated phone books; therefore, you may see an increase in phone books in the community's curbside recycling and drop-off recycling containers.

YP Directory: Greater New Haven YP

Approximate Delivery Start Date: 11/10/16

Approximate Delivery End Date: 12/29/16

Distribution Concerns Email:
sbconcerns@teampdc.com

Residents have the choice about which directories they would like to receive or stop receiving in the future. Residents can request directories or opt-out of future phone book deliveries by visiting www.YellowPagesOptOut.com, which is the official site of the Yellow Pages industry provided at no cost to users, cities and states.

It is a free, convenient and secure way to limit or stop home delivery of telephone directories. Data submitted will never be used for marketing purposes and never be given to third parties.

Please consider adding this information to your community's website to inform your residents about their phone book opt-out opportunities. Refer to the following site to obtain the opt-out site widget to place on your community website:
<https://www.yellowpagesoptout.com/opt-out-embed-code>.

The phone books are expected to be placed at the front door whenever possible or in a common area.

If you encounter abandoned YP directories, please do not hesitate to notify us using our distribution concerns email address listed above for pick-up and removal during the delivery timeframes referenced above.



AJ Shea Construction

ajshea.com

American Parkinson Disease Association

Connecticut Chapter Support Group

Mystic Healthcare

475 High Street, Mystic, CT 06355

Meets the 3rd Wednesday of each month
from 1:15-3:15 pm.

Contact Donna Weissman at 860-536-1020

Pilates for Life

The Tradition and Method of Joseph Pilates

Joseph H. Pilates, originator of **Pilates Method**...
trained **Romana Kryzanowska**, Master Teacher NYC...
Romana trained **Marlene Powers**, let Marlene train you
in the true tradition...

Fitness and Flexibility
Alignment and Posture
Deep Core Strengthening
Physical Therapy Compliment
Certified Instructor
Over 900 Training Hours
Mat Classes
Private Equipment Instruction
Beginner to Advanced



2010, 2013 & 2015
Readers Choice
Best Pilates Studio
26A Saybrook Road
Essex, Connecticut
860-227.5790

Celebrating 11 Years!
Marlene Powers
www.inspiredbypilates.com
email: info@inspiredbypilates.com

Musical Masterworks



Edward Arron, Artistic Director. Photo credit: Ania Simpson

EVENTS

Saturday, February 11, 2017 at 5 pm

Sunday, February 12, 2017 at 3 pm

In February, we will shine a light on the relationship between Schumann and Brahms, as the elegant soprano Hyunah Yu returns to sing Schumann's transporting song cycle *Frauenliebe und leben*.

Also, as part of a new Musical Masterworks venture, we invite you to join Edward Arron before the February concerts for an in-depth pre-concert talk about the lives and compositions of Robert Schumann and Johannes Brahms.

Hyunah Yu, soprano
Anna Polonsky, piano

Erin Keefe, violin
Edward Arron, cello

Brahms: Scherzo from F-A-E Sonata for Violin and Piano
Massenet: *Élégie* for Soprano, Piano and Cello
Schumann: Intermezzo from F-A-E Sonata for Violin and Piano, WoO 22
Schumann: *Frauenliebe und -leben* for Voice and Piano, Opus 42
Robert Kahn: Two Songs for Soprano and Piano Trio, Opus 46 (1906)
Brahms: Piano Trio in C Major, Opus 87

Saturday, March 11, 2017 at 5 pm

Sunday, March 12, 2017 at 3 pm

For our March program, we will juxtapose both of Mozart's masterful Piano Quartets with two Mozart-inspired works from the twentieth century.

Jeewon Park, piano
Tessa Lark, violin
Dimitri Murrath, viola
Edward Arron, cello

Mozart: String Trio fragment in G Major, K. 562e, Anh. 66
Arvo Pärt: *Mozart-Adagio* for Piano Trio (1992/1997)
Mozart: Piano Quartet in g minor, K. 478
Alfred Schnittke: *Moz-Art à la Haydn* for Violin and Viola (1977)
Mozart: Piano Quartet in E-flat Major, K. 493

Rogers Lake Authority News

The Rogers Lake Authority is looking for people interested in staffing the patrol boat for the summer of 2017. The Rogers Lake Authority deploys a patrol boat on Rogers Lake for 30 hours a week from Memorial Day to Labor Day for the purpose of promoting safe activities on the lake. Multiple people may share this position. If you are interested, please email Dick Smith at rogerslake2@comcast.net.

Qualifications of the RLA patrol boat operator:

- Must have safe boating and PWC course certificates.
- Must have training by an RLA designated member.

- Minimum age 21

The RLA Patrol Boat Operator promotes the safety of people utilizing the lake. This includes:

- Monitoring the safe operation of vessels on the lake.
- Informing vessel operators of the Rogers Lake rules and regulations.
- Providing assistance to vessels or swimmers as needed.

Every leap year Rogers Lake is to be lowered in the fall so that landowners can perform any maintenance at the waters edge. That did not happen this year

because of the drought and potential lack of rain. The hope is the lake can be lowered for this activity after Labor Day of next year.

The Rogers Lake Authority asks for your assistance in reporting unsafe activity occurring on Rogers Lake anytime of the year. To report any unsafe activities, please use the form that is available on the Rogers Lake Authority website http://www.oldlyme-ct.gov/Pages/OldLymeCT_BComm/rogers_lake/index?textPage=1 Click on "Report Boating Violation."

Thank you for your assistance.

Trash & Recycling

Curbside trash removal is performed by Old Lyme Sanitation (860-434-3800). There is no trash pick-up on the following Holidays: Christmas (Dec. 25), New Year's (Jan. 1), Memorial Day (last Monday in May), July 4th, Labor Day (first Monday in Sept.), and Thanksgiving Day (fourth Thursday in Nov.).

For Christmas and New Year's (Monday holidays), trash pickup moves to the following day, until Thursday and Friday, which remain on schedule. If the Monday holiday falls on your recycling day, Monday will be picked up on Tuesday, along with Tuesday's regularly scheduled pick up, and the rest of the week will remain on schedule. Please be advised that Old Lyme Sanitation DOES NOT take off the same Holidays as the Town does.

Please have trash container out at curbside by 6 am on your assigned day. Containers should be three feet away from any other objects, such as mailboxes, cars, other containers, planters, etc. Please be mindful not to block breakdown/emergency lane with receptacle. Clearly mark your address on recycling and trash receptacles to avoid mix up, removal or displacement of cans. Phone Michele Hayes (860-434-1605, ext. 212) with any additional trash removal questions that you may have.

Single stream curbside recycling pick-up is provided for clean bottles, cans, #1 - 7 plastics and paper products co-mingled in the green recycling carts every other week. Corrugated cardboard boxes need to be flattened for recycling. A complete list of acceptable single stream recyclables is available on the Town's website (www.oldlyme-ct.gov)-- click the trash and recycling link on the Selectman's or Public Works pages or

at www.shorelinesanitation.com. Information is also available in the Selectman's Office at the Memorial Town Hall, 52 Lyme Street, and at the Landfill/Transfer Station on Four Mile River Road. Please phone Michele Hayes (860-434-1605, ext. 212) with any additional questions you may have.

Curbside recycling is performed every other week by Old Lyme Sanitation (860-434-3800). There is no recycling pick-up on the following Holidays: Christmas Day (Dec. 25), New Year's (Jan. 01), Memorial Day (last Monday in May), July 4th, Labor Day (first Monday in Sept.), and Thanksgiving Day (fourth Thursday in Nov.). Recycling normally collected on holidays, recycling pickup moves to the following day, until Friday, which remains on schedule.

Recycling information is available on the Town's website (www.oldlyme-ct.gov), as well as in the Selectman's Office at the Memorial Town Hall, 52 Lyme Street, or at the Landfill/Transfer Station on Four Mile River Road. Clearly mark your address on recycling and trash receptacles to avoid mix up, removal or displacement of cans. Phone Michele Hayes (860-434-1605, ext. 212) with additional questions you may have.

Additional automated trash and recycling containers should be ordered through Michele Hayes (860-434-1605, ext. 212) in the Selectman's Office at the Memorial Town Hall, 52 Lyme Street. Containers cost \$80. Please mark clearly your address on recycling and trash receptacles to avoid mix up, removal or displacement of cans. Homeowners are responsible to replace lost, stolen or broken cans at their expense.

Transfer Station Information

Transfer Station/Landfill Hours - The Transfer Station is located on Four Mile River Road and is open Tuesday-Friday, 7:30 am-3:45 pm, Saturday, 8:30 am - 4 pm. Closed Sunday and Monday. Taxpayers' vehicles should have a Transfer Station sticker affixed to the right-hand side of windshield. Vehicles without a sticker should bring proof of property address (i.e., tax bill, mortgage statement or closing papers), along with a driver's license and registration.

Bulky Waste and Demolition:

Vehicles will be charged by weight at \$110/ton. Recyclables should not be mixed in the same load with Bulky Waste or Demolition Debris. Loads less than 100 lbs. are charged a minimum fee of \$5.

Brush is charged on a per load basis. No wood or limbs thicker than four inches are accepted.

Grass clippings are not allowed at the Transfer Station because of chemical contamination from pesticides and fertilizers and cannot be deposited in your trash can. Please compost on your property.

Electronics are now accepted at the Transfer Station. Residents can bring the following items to the Transfer Station on Four Mile River Road: computers (personal computers, mainframes, med-range computers, laptops); networking equipment (hubs, switches, control cards, etc.); computer monitors, televisions, printers, keyboards, mice, adaptors, stereos, speakers, VCR's, scanners, fax machines, copiers telephones and telephone systems, computer wire and cable; computer drives and storage devices (floppy drives, CD ROMs, hard drives), power supplies, circuit boards, microwaves, scrap copper (cable, pipe, etc.), scrap aluminum (machine and machine parts, cable extrusions, etc.), fluorescent light bulbs, UPA (uninterrupted power supply) batteries, and related computer and electronic equipment.

There is no charge for CLEAN mattresses & boxsprings brought to the Transfer Station thanks to a state initiative.



Lymes' Senior Center

26 TOWN WOODS ROAD - OLD LYME

Call (860) 434-1605 EXT. 240 to register or for more information on becoming a member. CHECK OUT our "new" southeastern Connecticut senior center website for upcoming events at <http://seniorcenterct.org>.

WEEKLY PROGRAMS

The Lymes' Senior Center offers many weekly programs of interest for Seniors 60 and over to include the following.

Exercise with Cathy on Monday and Wednesday mornings at 10:30 am.

Sit & Be Fit Tuesday mornings at 10 am.

Tai Chi Wednesday mornings at 9 am.

Yoga Classes Level 1 and Level 2 on Wednesday & Thursday evenings at 4:30 pm.

Beginner & Advanced Tap Class on Thursday mornings at 10 am and 10:45 am respectively.

Piyo (Pilates-Yoga Class) on Friday mornings at 8 am. and Tuesday nights at 5:45 pm.

Balance & Tone Class Friday mornings at 10:30 am.

Line Dancing Classes on Friday afternoons (starting in January) at 1 pm.

Weekly Bridge programs Monday and Thursday afternoons.

Nickel, Nickel Card Game Monday & Thursday afternoons.

Wii Bowling Thursday afternoons.

Computer Classes the first Monday of the month.

Art Classes Monday and Tuesday mornings.

The Shoreline Artists' Workshop meets Friday mornings.

We offer **Day Trips** from March- December and **Overnight Trips and Cruises** year round.

WE OFFER THE FOLLOWING FREE SERVICES:

OLVNA Nurse is on premises Monday- Thursday from 11:15- 1:15 pm & Friday from noon - 1 pm.

Financial Health Checkup the 2nd Thursday of the month.

Brain Yoga - Wednesday afternoons.

Hearing Clinic on the first Wednesday of the month.

Foot Clinic the third Wednesday of the month.

In addition, for a small fee, we also offer **Reflexology** every other Wednesday.

FREE SPECIAL EVENTS

The Old Lyme Town Band Holiday Concert will be held Sunday December 11 at 2 pm.

Lecture on Feeding the Birds in Winter presented by Linda Turner of Plantatia will take place on December 13 at 1 pm.

Holiday Bingo is on December 14 at 1 pm.

Holiday Luncheon on December 21 at 12 pm.

Belle of the Fall Band performance on December 21 at 1:30 pm.

Select Singers of LOL High School performance on December 22 at 1 pm.

Senior Social featuring Ragtime Jack Radcliffe will perform will be held on January 4 at 1 pm, with refreshments to follow.

Let's Talk about Healthy Resolutions presented by the OLVNA Nurse, Karen Veselka, will take place on January 6 at 1 pm.

Ways to Prevent Depression, Anxiety & Grief from Interfering and Consuming your Life presented by Lisa Naverra, Clinical Social Worker from Senior Bridge will be held on January 10 at 1 pm.

How-to-Save-a-Life-and-What-to-Do-Before-the-Ambulance-Arrives presented by EMT's/ EMS' Colleen Atkinson and Doug LoPresti on January 11 at 1 pm.

A Sing a Long with Songbird Judy Hall will take place on January 17 at 1:00 pm, Bingo on January 18 at 1 pm.

Brain Games and Memory Testing on January 20 at 1 pm.

Jimmy McHugh Songbook Performance on January 25 at 1 pm.

Senior Social featuring Mr. Magic will be held on February 1 at 1 pm and refreshments will follow.

Valentine's Day Social featuring Singer Jose Paulo on February 14 at 1 pm.

Bingo on February 15 at 1 pm.

Writing your Advanced Directives presented by the VNA of Lower Valley will be held on February 21 at 1 pm.

Lincoln - The Man, The Presidency on February 22 at 1 pm.

Afternoon with the Gillettes historical performance will take place on February 28 at 1 pm.

Senior Social featuring Singer T-Bone will take place on March 1 at 1 pm.

Bingo on March 8 at 1 pm.

LOL Jr High Jazz Cats Jazz Band will perform on March 15 at 1 pm.

St. Patrick's Day Luncheon on March 17 at noon.

Gray School of Irish Dance on March 17 at 1:30 pm.

If you have any questions about attending any of these programs, please call the number listed above.

COLDWELL BANKER

RESIDENTIAL BROKERAGE

LISTED BY CB

SOLD



132 Essex Street
Listed at \$1,885,000

LISTED & SOLD BY CB

SOLD



38 Hatchett Point Road
Listed at \$1,600,000

LISTED & SOLD BY CB

SOLD



10 Collins Lane
Listed at \$1,495,000

LISTED BY CB

SOLD



7 & 11 McCurdy Road
Listed at \$1,495,000

The Old Lyme Office
 Listing and Selling Luxury Properties
 Year after Year
EXPERIENCE ~ KNOWLEDGE ~ RESULTS

LISTED BY CB

SOLD



54 East Shore Road
Listed at \$1,400,000

LISTED & SOLD BY CB

SOLD



16 Sandpiper Point Road
Listed at \$1,350,000

LISTED BY CB

SOLD



166 Niantic River Road
Listed at \$1,350,000

LISTED BY CB

SOLD



108 Westbrook Road
Listed at \$1,245,000

LISTED BY CB

SOLD



247 & 380 Ingham Hill Road
Listed at \$1,150,000

LISTED BY CB

SOLD



35 Riverside Drive
Listed at \$1,150,000

The above sales of the Old Lyme Office closed for \$1m+ from 1/1/2016 through 11/17/2016

Old Lyme Office | PO Box 509/86 Halls Road | Old Lyme, CT 06371 | 860.434.8600

ColdwellBankerHomes.com

©2016 Coldwell Banker Residential Brokerage. All Rights Reserved. Coldwell Banker Residential Brokerage fully supports the principles of the Fair Housing Act and the Equal Opportunity Act. Operated by a subsidiary of NRT LLC. Coldwell Banker, the Coldwell Banker Logo, Coldwell Banker Previews International, the Coldwell Banker Previews International logo and "Dedicated to Luxury Real Estate" are registered and unregistered service marks owned by Coldwell Banker Real Estate LLC.



Buy a new home
for the holidays



Nancy Johnson
860.227.6880

ndjohnson@wpsir.com

nancyjohnson.williampitt.com

OLD LYME BROKERAGE | 103 HALLS ROAD | 860.434.2400
ESSEX BROKERAGE | 13 MAIN STREET | 860.767.7488
Each Office is Independently Owned and Operated.

Lions Club Super Bowl Sunday Pancake Breakfast

The Lyme Old Lyme Lions Club will be serving their annual Super Bowl Sunday Pancake Breakfast on Sunday, February 5, 2017 at the Lyme Old Lyme High School.

Money raised from the Super Bowl Pancake Breakfast event is used to support scholarships for deserving Lyme Old Lyme High School students.

Bring your family! Breakfast is served from 8 to 11:30 am. Enjoy pancakes (with or without blueberries), egg sandwiches etc.

Enjoy the Tecno-Ticks robotic team, Boss Guitar music, and prizes donated by local businesses. Tickets are \$8 for adults, \$6 for seniors. Children under 12 are free.

Come meet your friends and support your community. Contact Lion Phil at 860-434-9044 for further information.

This year marks the 44th anniversary of the Lyme Old Lyme Lions and the 101st anniversary of Lions Clubs worldwide. Each year Lyme Old Lyme Lions distribute four \$1,500 scholarships. In addition, this year the Lions will spend over \$ 8,000 on other local support services. We also work at the soup kitchen, and have an Annual Car Show on Memorial Day.

The Old Lyme Lions participate in a Lions sponsored program called Pedi-Vision.

Trained Lions provide free vision screening which can provide written information on condition of your or your children's eyes, and indicate that a follow up visit to an optometrist or ophthalmologist may be required.



Set the tone for a
beautiful home.

1275 Boston Post Road • Westbrook, CT
860.399.6161
www.westbrookfloor.com

WESTBROOK
FLOOR COVERING

Tues - Fri: 9am - 5pm • Sat: 10am - 4pm
Closed Sun & Mon
Evening Appointments Available

BEAUTIFUL TREES MAKE A HOUSE A HOME.

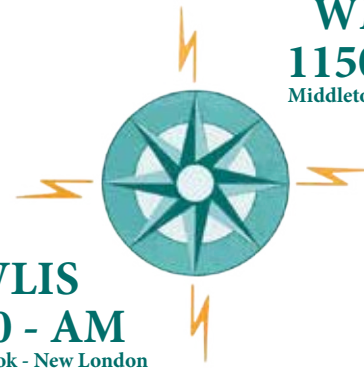
We're Bartlett Tree Experts,
a 100+ year old tree and shrub company
with global reach and local roots.
Our services include:

- Tree & Shrub Pruning
- Cabling & Bracing
- Fertilization & Soil Care
- Insect & Disease Management



Call us at 203.453.1357 or visit us at BARTLETT.COM  

WMRD
1150 - AM
Middletown - Hartford



WLIS
1420 - AM
Old Saybrook - New London

**We are
The Best of the Valley & Shoreline!!**

*News, Weather, Sports, Traffic, Music, Talk
and Opinion, from around the Corner
and around the World!!*

We've Got Personality!!!

www.wliswmrd.net

SHOP SPIRITS & SAVE! • SHOP SEASIDE & SAVE! • SHOP SPIRITS & SAVE! • SHOP SEASIDE & SAVE!

Come in for
all of your
**Holiday
Needs**



SEASIDE WINE & SPIRITS

118 Main Street - Old Saybrook
860-388-3015

Shoreline's Best

Visit our
other location

Spirits of Madison
Super Stop & Shop Plaza



SERVICE - SELECTION - EVERYDAY LOW PRICES - CONVENIENCE
EASY PARKING - WEDDING & PARTY SOLUTIONS - SMILES

Estuary Council Regional Senior Center

220 Main Street, Old Saybrook
860-388-1611

The Estuary Council of Seniors, Inc. is a community center for the region's residents over 50 years old providing meals, transportation, health services, educational classes, exercise programs, and socialization activities. We have been promoting healthy and active lifestyles through quality programs and services in the nine-town Estuary region for over 40 years. Please visit us at www.ecsenior.org for additional information or call us at 860.388.1611.

BINGO AT THE ESTUARY!

Our Thursday night Bingo is hibernating until spring! Watch for our announcements for its return in April!

ESTUARY GYM IS SILVER SNEAKERS APPROVED!

The Estuary Gym is a Silver Sneakers wellbeing fitness location! If you are a member of a Silver Sneaker participating health plan in CT, the Silver Sneakers

plan will pay for your gym visits. Does NOT apply to fitness classes. Check eligibility by contacting the Estuary.

THE MARSHVIEW FITNESS CENTER

The Estuary has a gym – and it's affordable! Stay healthy and strong by working out in our gym. Membership Options: \$50 for 3 months, \$90 for 6 months, \$150 for a year. Includes: Mandatory fitness assessment, three training sessions on each piece of equipment, and a one-hour individualized program consultation with our certified fitness trainer. Stop by the office for a tour and learn how to become a gym member.

The Estuary Thrift Shop offers the best bargains on the shoreline! Clothing, furniture housewares, decorations, and jewelry are just a few of the things you will find. Every day is different! All ages are welcome to come in and shop. Open Saturdays! Daily Specials!

THE MARDI GRAS® COLLECTION

7 STYLES
38 COLORS



419 MARDI GRAS® CHROME

DELTA

Pat. D709,951

Comcast

Mardi Gras

A cost effective way to advertise your brand!

MARDI GRAS®

- Jumbo barrel
- Rubber grip for writing comfort
- Distinctive silver accents
- Strong click retraction and clip
- Guaranteed ultrasmooth writing ink

Blue (default) or black ink
Barrel Imprint: 1-5/8" x 1/2"
Minimum Qty: 250

AS LOW AS
46¢-52¢ EA.



411 MARDI GRAS®
AS LOW AS 46¢ EA.



415 MARDI GRAS® HEX
AS LOW AS 52¢ EA.



412 MARDI GRAS® JUBILEE
AS LOW AS 46¢ EA.



416 MARDI GRAS® MAGIC
AS LOW AS 46¢ EA.



413 MARDI GRAS® NIGHT
AS LOW AS 46¢ EA.



419 MARDI GRAS® CHROME
AS LOW AS 50¢ EA.

Essex Printing

860-767-9087 • print@essexprinting.com



Known for freshly-made breads, desserts, catering, and unique menu items, award-winning personal and professional chef Deke Haylon and team offer a variety of options for every meal or event!



visit us at haylonsmarket.com

FREE

Cookie or Dirt Bomb with your order of \$10 or more

Only with this coupon. One coupon per order. Excludes tax and gratuity. Not valid with any other offers.

Expires 1-31-17

50% OFF Individual Dessert

Buy one dessert at regular price, get the second dessert of equal or lesser value for 50% off.

Only with this coupon. One coupon per order. Excludes tax and gratuity. Not valid with any other offers.

Expires 1-31-17

\$2 OFF Sandwich of your choice

Only with this coupon. One coupon per order. Excludes tax and gratuity. Not valid with any other offers.

Expires 1-31-17

Triangle Building Associates

Inc.

Carpenters Builders



General Contractor
Remodeling Projects
Complete Additions
Custom Homes

ESSEX, CT

860-767-1272

email: trisquare2010@att.net

NH Lic#0003590 HIC Lic# 0556517 Suffolk Cty NY Lic# 41997-H



OF NEW LONDON COUNTY

The American Academy of Pediatric Dentistry recommends children be seen by a Pediatric Dentist by the First Tooth or First Birthday!

Establish your child's dental home now and call us for an appointment!

131 Boston Post Road • East Lyme

860.691.5014

"Creating happy healthy smiles one child at a time."

www.ChildrensDentalNLC.com



446 Main Street #14, Old Saybrook
\$739,000 | 2 BR | 2.1 BATHS
Beautiful North Cove views. Main Street Convenience. 50+ Community.



31-2 Baker Lane, Lyme
\$625,000 | 3 BR | 3.1 BATHS
First time offered, this exquisite post and beam Yankee Barn home on 6.04 beautiful private acres.

You have a vision, . . .
I have the tools to get you there



Allyson Cotton
860.227.6016
acotton@wpsir.com

allysoncotton.williampitt.com
OLD LYME BROKERAGE | 303 HALLS ROAD | 860.434.2400
65 COUNTRIES | 20,000 SALES ASSOCIATES | 850+ OFFICES
BROOKLYN | BEIJING | OLD LYME | PARIS | MANHATTAN

Each Office is Independently Owned and Operated. ©

Duck River Garden Club

We have moved our meetings to the Old Lyme Memorial Town Hall, 52 Lyme Street, and our meetings begin at 6:30 pm on the fourth Tuesday of the month.

DUCK RIVER GARDEN CLUB YOUTH OUTREACH

Mile Creek Elementary students planted a new perennial flower bed at the school as part of ACE Gardening classes led by Duck River Garden Club Youth Outreach program, Suzanne Thompson and Martin Griswold, from Judges Farm Perennials, wholesaler in Old Lyme. Third and fourth-graders learned about plants, botany, annuals and perennials, native plants and weeds in the 4 classes in October 2016. This is the third ACE program organized and taught by DRGC members.



Mile Creek students
L to R:
Colette Marchant,
Huck Griswold,
and Gabrielle Field

ANNUAL COMMUNITY WREATHMAKING

We join together to create 20 holiday wreaths for our town buildings. Scout groups from our community also join us to make "tussie mussies" (small decorative bouquets) for Meals on Wheels which are delivered to local residents. We also make donations to Shoreline Food Pantry and a local needs family identified by Lymes Youth Service Bureau.



L to R Agnes O'Connor and Paula Schiavone share their proud achievement.



L to R: Gail O'Sullivan, Treasurer;
Beverly Pikna, Assistant Treasurer;
Kathy Burton, President;
Suzanne Thompson, Secretary;
Fay Wilkman, Vice President;
Paula Schiavone, Corresponding Secretary

Christy Laurence Realty LLC

Since 1985

P.O. Box 4022 ~ Old Lyme, CT 06371



Christy Laurence
Real Estate Broker

GRI, ABR, CIPS, AHWD, EPRO

mobile 860.235.0104

fax 860.434.1371

email Christy@christylaurence.com

web ChristyLaurence.com

*Your Personal
and Family Realtor
for Life*



SHORELINE PERIODONTICS PC



Dr. Gregory Toback

is pleased to welcome

Dr. Marianne Urbanski



"Our practice is committed to providing patients with state-of-the-art treatment for all forms of periodontal disease in a comfortable and caring environment."

**Dental Implants
Laser Gum Surgery
Esthetic Gum Surgery**



Free Implant Consultations

NEW LONDON, CONNECTICUT

190 Hempstead St

New London, CT 06320

860-443-2428

www.shorelineperio.com

*Happy
Holidays
from
all of us
at
Events
Magazines!*

YOU CAN ALSO PAY YOUR TAXES ONLINE!

Old Lyme taxes can be paid online with a debit card.

Visit the town website
www.oldlyme-ct.gov
and select Online Payments
from the toolbar on the left.

The Shoreline Soup Kitchens & Pantries

MEAL SITE & FOOD PANTRY

Meal:

Saturdays 9:00 - 10:00 am

Food Pantry:

Saturdays 9:00 - 11:00 am

First Congregational Church
Of Old Lyme

2 Ferry Road, Old Lyme



The Williams School

Small School • Big Impact

Congratulations to our students
on their recent accomplishments!



Cross Country runners earned All CISAC honors.



Our Middle School play *Seussical The Musical!* was a hit.



Amar Viswanathan '17 named a Commended Student
in the 2017 National Merit Scholarship program.

**Read about these students and
more at williamsschool.org**

Information Session
Sunday, January 22, 2017 • 1-3PM

Independent College Prep Day School • Grades 6-12
On the campus of Connecticut College • New London, CT

Lyme-Old Lyme High School Honors Veterans

Lyme-Old Lyme Schools Honor Local Veterans in Ceremonies on “One of the Best Days of the School Year”



Lyme-Old Lyme High School students participate in the Nov. 11 Veterans Day assembly.

Some 45 veterans or active members of the armed services attended a variety of Veterans Day ceremonies held at Lyme-Old Lyme Schools throughout the day on Friday, Nov. 11. Noting that this was a record number of attendees, Region 18 Superintendent Ian Neviasser commented enthusiastically, “This is one of the best days of the year in our schools. The students have the opportunity to learn a great deal first-hand from our visitors when they hear about the veterans’ sacrifices, bravery and extraordinary commitment. The whole experience combines to offer such a valuable real-world lesson for the students – one that’s far superior to reading from a textbook.”



Students at Mile Creek Elementary School held their own ceremony to honor local veterans.

All members of the Lyme-Old Lyme community, who are veterans or in active military service, along with faculty themselves and relatives of students, faculty and administration in either category, are invited to join the ceremonies on Nov. 11. As Neviasser explained, “There were moms, dads, uncles, aunts, teachers, staff, and veterans from every branch of military.”

The day began for the visitors -- who ranged in age from World War II veterans in their nineties to active members of all branches of the military -- with a hearty breakfast at Lyme-Old Lyme

Middle School. An assembly followed at that school before moving over to the high school for a reception preceding another assembly there. Events were also held at the elementary schools in the afternoon.



Lyme-Old Lyme Schools held events throughout the District to honor those who had served or are serving our country.

During the all-school assemblies, the school bands and choruses performed, speeches were given, flags were raised, and the veterans had the opportunity to introduce themselves and discuss their current and/or prior roles in the military.

In an extremely generous gesture, the Lyme-Old Lyme VFW Post 1467 chose the high school assembly as the time to present a check for \$3,000 towards the trip being taken to Hawaii in December by the high school band and chorus to perform in ceremonies celebrating the 75th anniversary of the Pearl Harbor attack. Lyme-Old Lyme High School Band Director Jacob Wilson and Chorus Director Kristine Pekar expressed their sincere appreciation for the donation on behalf of the entire band and chorus.



Lyme-Old Lyme High School Band Director Jacob Wilson and Chorus Director Kristine Pekar hold the check presented by VFW Post 1467 to support the music students' upcoming trip to Hawaii.

Attention



to detail

it's what sets us

apart

ESSEX PRINTING

essexprinting.com



OLD LYME EVENTS
Old Lyme Town Hall
Lyme Street
Old Lyme, CT 06371

PRSR STD
U.S. Postage
PAID
Permit No. 155
Deep River, CT

POSTAL CUSTOMER

Online and On Main Street



Some banks are closing branches in favor of online banking. Not Essex Savings Bank. Instead, we have added locations and expanded services – including online and mobile banking – to better meet your financial needs. As a community bank, we are here to serve you in the manner that works best for you. Stop by one of our conveniently located branches or visit us at essexsavings.com to see how we can meet your banking needs online and in person!



Essex, 35 Plains Road, 860-767-2573 • Essex, 9 Main Street, 860-767-8238 • Chester, 203 Middlesex Avenue, 860-526-0000
Madison, 99 Durham Road, 203-318-8611 • Old Lyme, 101 Halls Road, 860-434-1646 • Old Saybrook, 155 Main Street, 860-388-3543
Toll-Free: 877-377-3922 • essexsavings.com

Member FDIC

 Equal Housing Lender